

Extended Surface Water Testing McKellar Township*

Posted November 27 2023

* Sites tested were: the lakes currently being monitored for E.coli, sites chosen for the Lake Capacity study of 2021, and current sites for testing for the Ontario Government's Lake Partner Program in McKellar Township.

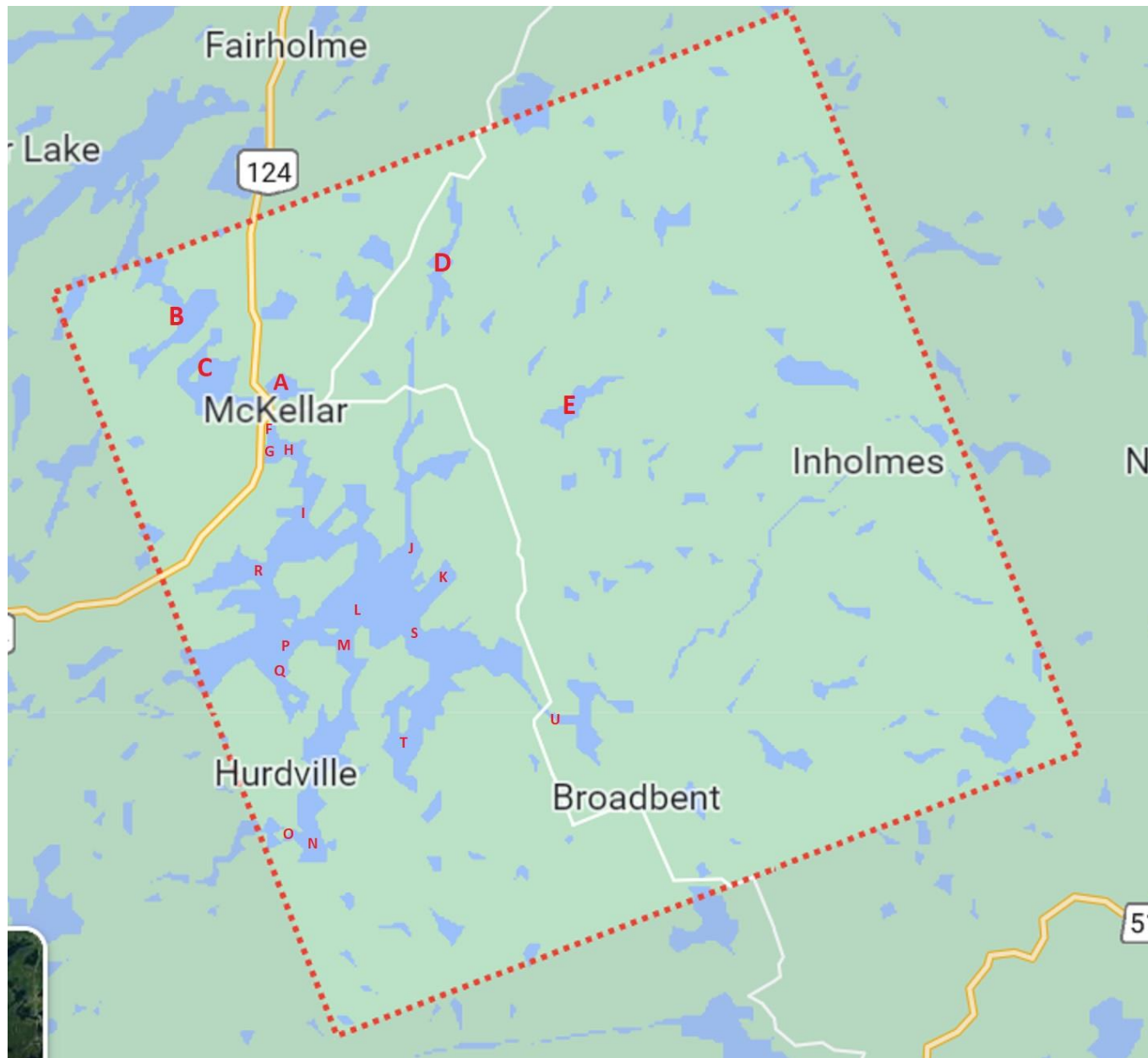
Lake Partner Program data can be found at <https://data.ontario.ca/dataset/ontario-lake-partner>



Researchers looking to use this data will find it on the DataStream web page at the DOI link :

<https://doi.org/10.25976/168q-zm19> . Unlike so many other links on the internet, this one is assured to never break, and will always resolve back to this dataset.

This [documentation page](#) explains how to find and explore the McKellar Lakes data page (the graph and the map) on the Great Lakes DataStream.



- A Armstrong Lake
- B Grey Owl Lake
- C McKellar Lake
- D Moffat Lake
- E Mary Jane Lake
- F Minerva
- G McKellar Bay LPP 19
- H Boat Launch LPP 18
- I McKellar Narrows
- J Luigis/Camp Rds
- K Inn Rd
- L Great Bay
- M Hurdville Arm
- N Hurdville Rd LPP 23
- O Hurdville Dam
- P South Tait
- Q Pine Point Tr LPP 8
- R Island Rd
- S Manitouwabing River Inlet
- T Jones Bay LPP 13
- U Stewart Park

A Armstrong Lake

Armstrong Lake		McKe llar		ON		Canada																		
Site	Date	Time	Depth	Temp	Total Phos	Calcium	Barr Pres	DO %	DO mg/L	SPC	C μS/cm	K Ωcm	TDS g/L	Sal	pH	pH	ORP	secchi	Lat	Long	Alt			
depth	D/M/Y	24 hr	m	°C	mcg/L	MLCA	mg/L	MLCA	mm Hg	μS/cm	conductivity	resistance	ppT		mV	mV	m							
12 m	13/9/2023	1014	surface	20.6					741.4	87	7.8	186.6		171	5.36	0.1213	0.09	7.3	-28.1	149.8	2.74	45.51286	-79.91765	277.3
	13/9/2023	1020	1	20.6					741.3	89	7.9	186.5		170.8	5.36	0.1212	0.09	7.3	28.4	165.9				
	13/9/2023	1019	2.74			26		4.76																
	13/9/2023	1024	3	20.6					741.6	84	7.6	186.4		170.6	5.37	0.1211	0.09	7.28	-27	175.6				
	13/9/2023	1030	6	8.4					741.9	16	1.9	210.6		143.2	4.76	0.1364	0.1	6.26	30.9	218				
	13/9/2023	1035	9	6					742	0	0	237.6		151.1	4.22	0.1538	0.11	6.25	30.7	91.4				
	13/9/2023	1038	11	5.7					742.1	-1	-0.1	269.3		170.2	3.71	0.175	0.13	6.53	15.2	-43.6				
12	25/7/2023	1413	surface	26.5					735.6	89	7.2	217.1		222.9	4.61	0.1408	0.11	7.54	-30.09	154.3	2.57	45.51278	-79.91762	276.52
	25/7/2023	1418	2.57			2																		
	25/7/2023	1424	5	9.6					736.5	39	4.4	239.9		169.6	4.18	0.1551	0.11	6.45	32.8	196.2				
	25/7/2023	1428	10	6.2					736.5	3	0.4	275.2		177.9	3.61	0.1782	0.13	6.64	23	76.6				
12	28/5/2023	840	surface	17.8					745.6	92	8.8	101.6		87.7	9.84	0.066	0.05	7.41	-27.7	150.5	2.29	45.51248	-79.91768	274.49
	28/5/2023	838	2.29			18		4.66																
	28/5/2023	846	1	17.7					745.8	89	8.4	101.5		87.4	9.85	0.066	0.05	7.38	-26	161				
	28/5/2023	853	5	7.1					745.1	71	8.5	103.8		68.3	9.64	0.0674	0.05	6.66	15.8	213.9				
	28/5/2023	901	10	5					743.3	22	2.8	204.3		128.9	4.78	0.1365	0.1	6.42	29.8	241.8				

B Grey Owl Lake

Grey Owl Lake																					
Site	Date	Time	Depth	Temp	Total Phos	Calcium	Barr Pres	SPC	C μS/cm	K Ωcm	TDS g/L	Sal	DO %	DO mg/L	pH	pH	ORP	secchi	Lat	Long	Alt
depth	D/M/Y	24 hr	m	°C	mcg/L MLCA	mg/L MLCA	mm Hg	μS/cm	conductivity	resistance	ppT				mV		mV	m			
5 m	13-9-2023	1500	surface	21			741.5	127.8	118	7.82	0.0832	0.06	85	7.6	7.08	-15.4	174.8	2.54	45.52514	-79.94125	275.74
	13-9-2023	1506	1	20.9			741.6	128.5	118.6	7.78	0.0835	0.06	80	6.9	7.08	-15.2	187.4				
	13-9-2023	1511	2	20.9			741.5	128.7	118.7	7.77	0.0837	0.06	74	6.7	7.05	-13.8	192.9				
	13-9-2023	1504	2.54		16	4.44															
	13-9-2023	1514	3	20.9			741.6	128.8	118.7	7.77	0.0837	0.06	81	7.3	7.05	-13.5	196				
	13-9-2023	1518	4	20.8			741.7	129.3	119	7.73	0.0841	0.06	76	6.8	6.89	-4.5	209.2				
	13-9-2023	1521	4.5	20.6			741.7	130.2	119.3	7.68	0.0887	0.07	59	5.2	6.53	15.8	180				
5	"25-07-2023	1123	surface	25.3			739.4	127.4	127.7	7.85	0.0828	0.06	89	7.4	7.45	-25.1	187.4	3.28	45.52571	-79.94181	273.06
		1129	2	24.7			738.4	127.3	126.6	7.86	0.0828	0.06	83	6.8	7.39	-21.8	197.5				
			3.28		< 2 mcg/L																
		1136	4	20.8			738.3	130.4	120	7.68	0.0846	0.06	61	5.5	6.64	22.7	218.3				
5	"23-06-2023	10:22	1.14		5													1.14	45.52532	-79.94168	278.03
5.2 m	1/6/2023	1215	surface	23.9			737.9	134	131.1	7.45	0.0872	0.07	91	7.8	7.5	-32.9	200.7	2.34	45.5269	-79.94281	276.2
			2.34		105	4.33															
		1222	3 m	16.6			737.6	152.4	127.8	6.59	0.0985	0.07	91	8.9	7.33	-22.1	202.8				
		1232	5 m	12.2			738.8	156.3	118	6.41	0.1012	0.07	27	2.7	6.42	29.8	178.1				

C McKellar Lake

McKellar Lake																					
Site	Date	Time	Depth	Temp	Total Phos	Calcium	Barr Pres	SPC	C μ S/cm	K Ω cm	TDS g/L	Sal	DO %	DO mg/L	pH	pH	ORP	secchi	Lat	Long	Alt
depth	D/M/Y	24 hr	m	$^{\circ}$ C	mcg/L MLCA	mg/L MLCA	mm Hg	μ S/cm	conductivity	resistance	ppT					mV	mV	m			
6.5 m	13-9-2023	1127	surface	20.9			743.4	131	120.8	7.63	0.0852	0.07	91	8.1	7.04	-13.3	150.6	2.97	45.50983	-79.92511	274.36
	13-9-2023	1131	2.97		17	4.34															
	13-9-2023	1132	1	20.9			743.4	131.6	121.3	7.6	0.0855	0.07	91	8.2	7.09	-15.9	159.9				
	13-9-2023	1137	3	20.9			743.4	131.4	121.2	7.61	0.0854	0.07	86	7.7	7.09	-15.9	168.4				
	13-9-2023	1140	5	19.3			743.3	141.6	127.3	7.05	0.0924	0.07	48	4.6	6.44	21.2	194.4				
	13-9-2023	1143	6	14.3			743	158.2	126.9	6.29	0.1035	0.08	1	0.1	6.24	32.7	215.7				
6.5	25/7/2023	1529	surface	26			736.7	132.3	134.7	7.57	0.0857	0.07	99	8	7.57	-32.8	152.6	3.34	45.50996	-79.92498	271.99
		1536	2	24.1			736.9	120.3	127	7.73	0.0841	0.06	97	8.1	7.51	-28.6	170.7				
			3.41		5																
		1541	5	11.5			737.3	159.8	121	6.12	0.0151	0.08	8	0.9	6.69	17.2	129.1				
6.5 m	1/6/2023	1340	surface	24.8			738.5	133.8	132.9	7.48	0.0867	0.07	92	7.6	7.34	-23.9	212	4.18	45.50987	-79.92487	274.1
			4.18		25	3.9															
		1346	3 m	16.4			738.4	154	128.7	6.49	0.1003	0.08	87	8.6	7.06	-6.9	229.7				
		1358	6 m	9.6			738	165.1	116.4	6.06	0.107	0.08	30	3.5	6.41	30.5	247.3				

D Moffat Lake

Moffat Lake																					
Site	Date	Time	Depth	Temp	Total Phos	Calcium	Bar Pres	SPC	C μ S/cm	K Ω cm	TDS g/L	Sal	DO %	DO mg/L	pH	pH	ORP	secchi	Lat	Long	Alt
depth	D/M/Y	24 hr	m	$^{\circ}$ C	mcg/L MLCA	mg/L MLCA	mm Hg	μ S/cm	conductivity	resistance	ppT					mV	mV	m			
3.3 m	8-9-2023	1529	surface	21.8			743.2	111	104.3	9.01	0.0721	0.06	90	7.9	7.06		210.1	1.52	45.54126	-79.87771	273.16
	8-9-2023	1533	1	21.8			743.3	110.9	104.1	9.02	0.0721	0.06	77	6.8	7.03		215.8				
	8-9-2023	1540	1.52	21.4	20	5.42	743.3	110.3	102.8	9.09	0.0716	0.06	73	6.4	6.87		226				
	8-9-2023	1535	2	20.9			743.2	111.9	103.1	8.94	0.0727	0.06	55	4.9	6.6		230.7				
	8-9-2023	1537	3	19.8			743.2	114.7	103.3	8.71	0.0748	0.06	36	3	6.42		247.5				
3 m	27-7-2023	1117	surface	26			736.8	115.8	118	8.64	0.0752	0.06	92	7.2	7.33	-18.2	188.1	2.22	45.54128	-79.87777	272.88
	27-7-2023		2.22		7																
	27-7-2023	1121	2	24.7			736.3	115.9	115.6	8.64	0.0751	0.06	75	6.4	6.82	12.4	212				
3.5 m	1-6-2023	1039	surface	24.8			742.6	102.9	102.6	9.71	0.067	0.05	96	7.9	7.24	-18.1	184	2.24	45.54103	-79.87785	271.28
	1-6-2023	2.24			24	3.94															
	1-6-2023	1044	1	20.9			741.9	115.1	106.1	8.7	0.0747	0.06	86	7.7	6.93	0.5	204.3				
	1-6-2023	1052	3	14.7			740.5	129.3	103.5	7.75	0.0838	0.06	60	6.1	6.49	26.2	233.6				

E Mary Jane Lake

Mary Jane Lake		McKellar		Township		ON		Canada													
Site	Date	Time	Depth	Temp	Total Phos	Calcium	Barr Pres	SPC	C μ S/cm	K Ω cm	TDS g/L	Sal	DO %	DO mg/L	pH	pH	ORP	secchi	Lat	Long	Alt
depth	D/M/Y	24 hr	m	$^{\circ}$ C	mcg/L	MLCA mg/L	mm Hg	μ S/cm	conductivity	resistance	ppT				mV		mV	m			
4.5m	8-9-2023	1200	surface	22.5			740.5	156.6	147.4	6.49	0.1	0.08	93	8.1	7.84		175.4	4.08	45.50864	-79.85369	288.36
	8-9-2023	1202	1	22.5			740.4	154	146.7	6.49	0.1002	0.08	90	7.9	7.92		181.6				
	8-9-2023	1206	2	22.4			740.4	153.5	145.9	6.52	0.0996	0.08	86	7.2	7.91		178.2				
	8-9-2023	1209	3	22.3			740.3	152.8	145.2	6.54	0.094	0.08	87	7.6	7.89		184.7				
	8-9-2023	1212	4	21.7			740.3	152.9	143.3	6.54	0.0992	0.08	84	7.3	7.74		188.6				
	8-9-2023	1210	4.08		29	14.7															
4.3	26-7-2023	1247	surface	25.4			734.7	157.7	158.9	6.35	0.1023	0.08	93	7.6	7.94	-54.7	155.8	3.45	45.51083	-79.85003	287.68
	26-7-2023	1254	3.45		< 2																
	26-7-2023	1256	3	25			734.2	155.8	155.8	6.42	0.1013	0.08	90	7.4	7.98	-57	164.1				
4 m	29/5/2023	1010	surf	18.7			740.3	67.4	59.6	14.91	0.0436	0.04	102	9.4	8.23	-76.1	150.9	2.61	45.51083	-79.849959	
	29/5/2023		2.61		15	13.1															
	29/5/2023	1015	3 m	17.1			738.5	189	160.8	5.29	0.1229	0.09	87	8.3	7.96	-59.7	163.6				

F Minerva Park, Manitouwabing Lake

Lake Manitouwabing tip of Minerva Park McKellar Ontario Canada																						
Site	Date	Time	Depth (m)	Temp	Total Phos	Calcium	Barr Pres	SPC	C μ S/cm	K Ω cm	Ms/c cm	TDS g/L	Sal	DO %	DO mg/L	pH	pH mV	ORP	secchi	Lat	Long	Alt
depth	D/M/Y	24 hr		$^{\circ}$ C	mcg/L	MLCA mg/L	MLCA mm Hg	μ S/cm	conductivity	resistance			ppT					mV	m			
1m	1/9/2022	1116	surface	21.24	< 30						0.066	0.043	0.03	101.3	8.9	7.37		246.9	N/A			

G McKellar Bay, LPP 19, Manitouwabing Lake

Manitouuabing La				McKellar Bay			McKellar			Ontario	Canada												
Site	Date	Time	Depth	Temp	Total Phos	Bar Pres	SPC	C μS/cm	K Ωcm	TDS g/L	Sal	DO %	DO mg/L	pH	pH mV	ORP	secchi	Lat	Long	Alt	Phos	Calcium	Cl mg/L
depth	D/M/Y	24 hr	m	°C	mcg/L MLCA	mm Hg	μS/cm	conductiv	resistance		ppT				mV	mV	m				LPP	LPP	LPP
10 m	15-9-2023	1150	surface	20.4		743.2	140.4	128	7.13	0.0911	0.07	82	7.3	7.11	-17.3	152.7	3.05	45.50374	-79.92007	272.67			
	15-9-2023	1157	1	19.9		742.1	139.5	125.9	7.17	0.0907	0.07	86	7.8	7.1	-16.5	168.7							
	15-9-2023	1202	2	19.8		741.6	139.3	125.4	7.18	0.0905	0.07	85	7.7	7.1	-16.6	180.4							
	15-9-2023	1150	3.05		3																		
	15-9-2023	1206	4	19.7		743	139.2	125	7.19	0.0905	0.07	78	7	7.11	-17.3	185.3							
	15-9-2023	1209	6	12.6		743.5	159.2	121.2	6.29	0.1027	0.08	5	0.5	6.24	32.8	220.5							
	15-9-2023	1215	8	8.7		743.3	186.2	128.5	5.37	0.1211	0.09	0	0	6.67	8	-14.7							
	15-9-2023	1159	9		15																		
9.6	23-7-2023	1133	surface	24.9		733.1	134.4	133.5	7.47	0.0869	0.07	92	7.3	7.51	-28.4	46.8	2.6	45.50475	-79.92088				
	23-7-2023		2.6		2																		
	23-7-2023	1126	3	24.6		735	139.9	139.3	7.12	0.0913	0.07	93	7.7	7.53	-30.2	164.8							
	23-7-2023	1130	7	11.2	2	734.3	192	140.5	5.22	0.1237	0.09	9	1.5	6.88	8.6	44.4							
9.6 m	31-5-2023	1555	surface	24.8		738.6	57.6	57.3	17.37	0.0374	0.03	100	8.1	7.49	-33.1	183	2.37	45.50374	-79.91994				
	31-5-2023		2.37		11																		
	31-5-2023	1612	5 m	9.9		735.1	167.2	119.3	5.98	0.1087	0.08	63	7	6.62	18.5	205.5							
	31-5-2023	1617	9 m	8.1	12	735.5	174.5	118.1	5.74	0.1132	0.08	16	1.9	6.42	29.4	166.3							
								Ms/c cm															
9.3 m	1/9/2022	1104	surface	21.73	160 mcg/L			0.66		0.43	0.03	102.1	8.97	7.33		193.7							
		1102	3	21.6				0.66		0.43	0.03	88.5	7.89	7.18		151.2							
		1059	6	10.89				0.067		0.044	0.03	5.1	0.47	7.85		80.1							
	1/9/2022	1055	9	7.2	< 30 mcg/L			0.13		0.082	0.06	2	0.24	7.1		-129.9	3 m						
	04-Jun-21																				13	4.3	9.4
	19-Jun-19																				11	3.2	5.7
	24-May-18																				10.1	4	6.3
	23-May-17																				11.3	3.9	5.9
	24-May-16																				11	3.9	6

H Lakeshore Rd Boat Launch LPP 18 Manitouwabing Lake

Lake Manitouwabing		McKellar ON		LPP site 18																						
Site	Date	Time	Depth	Temp	Total Phos	Calcium	Bar Press	SPC	C μ S/cm	K Ω cm	TDS g/L	Sal	DO	DO	pH	pH mV	ORP mV	secchi	Lat	Long	Alt	Tot Phos	Calcium	Cl mg/L		
depth	D/M/Y	24h	(m)	$^{\circ}$ C	mcg/L MLCA	mg/L MLCA	mmHg	μ S/cm	conductivity	resistance	ppT	%	mg/L	mg/L	mg/L	mV	mV	m				LPP mcg/L	LPP mg/L	LPP		
9.7 m	31/5/2023	1646	surface	25			737.2	154.8	154.6	6.47	0.1004	0.08	94	7.7	7.48	-32.6	170.9	3.44 m	45.50266	-79.91458						
			3.44 m		17																					
		1656	5 m	10.8			736.8	176.6	128.3	5.67	0.1147	0.08	72	8.2	6.68	15	206.2									
		1701	9 m	8.2			736.5	183.6	124.7	5.43	0.1194	0.09	19	23	6.41	30	229.4									
	2022																									
	04-Jun-21																					9.4	4.4	9.4		
	09-Oct-20																					9.3	4.2	7.9		
	19-Jun-19																					8.9	3.4	6.3		
	18-May-18																					9.6	3.9	5.5		
	23-May-17																					14.6	4	5.6		
	24-May-16																					10.5	4.1	6		

I McKellar Narrows, Manitouwabing Lake

Lake Manitouwabing, McKellar ON																						0			
		McKellar Narrows		secchi	depth	is N/A because		you can	see the	lake	bottom														
Site	Date	Time	Depth	Temp	Total Phos	Calcium	Barr Press	DO	DO	SPC	μS/cm	C	μS/cm	K	Ωcm	TDS	g/L	Sal	pH	pH mV	ORP	secchi	Lat	Long	Alt
depth	D/M/Y	24 hr	m	°C	mcg/L MLCA	mg/L MLCA	mmHg	%	mg/L	conductivity resistance															
																	ppT			mV	m				
2 m	"15-9-2023	1100	surface	19.5			747.1	75	6.8	134.2	119.6	7.46	0.087	0.07	6.92	-6.1	168.5	N/A	45.4916	-79.91497	275.38				
		1106	1	18.5	19	4.79	745.6	75	7.1	140.6	123.1	7.11	0.0914	0.07	6.89	-4	179.1								
		1111	2	18.4			747.8	76	7.1	140.3	122.6	7.13	0.0912	0.07	6.87	-2.9	186.7								
1.1m	27-7-2023	1127	surface	26.3			733.6	88	7.1	130.9	133.8	7.65	0.0849	0.07	7.22	-11.8	201.8	N/A	45.4918	-79.91456	271.4				
		1132	1	25.7	10		733.6	91	7.5	128.2	129.1	7.83	0.0831	0.06	7.34	-19.3	200.5								
2 m	31/5/2023	1723	surf	26			738	93	7.5	150.8	153.4	6.64	0.0978	0.07	7.26	-18.9	204.7	N/A	45.4909	-79.91546					
		1733	1.5 m	20.2	13	4.36	737.7	101	9	169.2	154	5.91	0.1099	0.08	7.73	-45.7	194.7								
											Ms/c cm														
2.1 m	1/9/2022	1346	1	20.04				89.7	8.07		0.059		0.038	0.03	7.26		277.2								
		1348	surface	21.03	< 30			90.8	8.12		0.053		0.034	0.02	7.15		260.7								

J Luigis/Camp Rds, Manitouwabing Lake

Manitouwabing Lake, McKellar ON					Luigis Lane / Camp Rd																
Site	Date	Time	Depth	Temp °C	Total Phos	Barr Pres	DO %	DO	SPC	C µS/cm	K Ωcm	TDS g/L	Sal	pH	pH mV	ORP	secchi	Lat	Long	Alt	
depth	D/M/Y	24 h	(m)		mcg/L MLCA	mm Hg		mg/L	µS/cm	conductivi	resistance		ppT		mV	mV	m				
18 m	11-9-2023	1148	surface	22.9		742.7	92	7.9	122.5	116.8	8.15	0.0797	0.06	7.26	-25.9	125.3	3.08	45.48529	-79.89054	272.62	
		1151	2	21.5		742.1	87	7.9	120.4	112.5	8.3	0.0784	0.06	7.23	-24.5	139.5					
		1200	3.08		18																
		1156	4	21.3		741.9	88	7.7	119.6	111.1	8.37	0.0777	0.06	7.14	-19.2	158.7					
		1204	6	19.2		741.4	58	5.4	120.1	106.8	8.33	0.078	0.06	6.56	14.9	194.2					
		1207	8	12.8		740.9	7	0.7	129.7	99.2	7.71	0.0842	0.06	6.12	39.5	219.1					
		1210	10	11		740.3	11	1.2	130	95.3	7.69	0.0844	0.06	6.13	38.6	219.3					
		1213	12	9.4		739.6	24	2.8	139.2	97.5	7.19	0.0903	0.07	6.17	36.2	221.6					
		1215	14	8.5		739.3	30	3.5	140.1	95.8	7.15	0.0908	0.07	6.19	35	225.5					
		1218	16	7.7		738.5	31	3.7	140.9	94.2	7.1	0.0915	0.07	6.19	34.8	230.7					
		1221	18	7.2		737.8	27	3.3	156.4	103.4	6.36	0.1027	0.07	6.24	31.7	226.5					
20.1 m	27-7-2023	1212	surface	25.7		732.4	93	7.6	115.3	116.8	8.67	0.0749	0.06	7.37	-20.7	223.7	2.73	45.48452	-79.89112	272.62	
		1215	2.73 m		8																
		1220	5 m	18		733.7	34	3.2	121.1	105.1	8.27	0.0787	0.06	6.4	36.4	262.1					
		1223	10 m	10.8		733.6	35	4	129	94.2	7.78	0.0836	0.06	6.34	39.1	264.5					
		1228	15 m	7.6		733.9	50	6	131	87.5	7.63	0.085	0.06	6.39	35.7	263.8					
		1234	19m	6.8		734.1	45	5.5	154.7	100.4	6.46	0.1007	0.07	6.36	37.4	267.8					
18.3 m	31/5/2023	1805	surface	24.8		738.2	97	7.9	145.5	145.1	6.87	0.0946	0.07	7.44	-30.1	208.7	2.2	45.48513	-79.89083	271.23	
			2.2		8																
		1812	5	14.9		738.3	84	8.4	164.4	131.8	6.12	0.1061	0.08	6.95	-0.05	240.7					
		1821	10	9.9		738.7	69	7.8	162	115.3	6.17	0.1055	0.08	6.57	21	257.1					
		1825	15	8.3		738.9	67	7.9	162.5	110.5	6.16	0.1054	0.08	6.54	22.5	263					
		1829	17	7.7		738.9	61	7.2	161.6	108	6.18	0.1051	0.08	6.49	25.4	266.8					
										Ms/c cm											
9m	30/8/2022	933	surface	23.18	< 30		99	8.45		0.038		0.025	0.02	7.09		251.7					
		931	4m	23.1			86.2	7.53		0.038		0.025	0.02	6.99		217.4					
		929	8m	12.18			24.2	2.45		0.036		0.023	0.02	6.01		241.8					

K Inn Rd, Manitouwabing Lake

Manitouwabing Lake, McKellar ON Canada Inn Rd																					
Site	Date	Time	Depth	Temp °C	Total Phos	Barr Pres	DO %	DO	SPC	C μS/cm	K Ωcm	TDS g/L	Sal	pH	pH	ORP	secchi	Lat	Long	Alt	
depth	D/M/Y	24 h	(m)		mcg/L MLCA	mm Hg		mg/L	μS/cm	conductivity	resistance		ppT		mV	mV	m				
8 m	15-9-2023	1311	surface	21.1		745.3	95	8.4	119.2	110.1	8.39	0.0775	0.06	7.1	-16.6	177	2.63	45.4832	-79.88072	268.81	
	15-9-2023	1317	1	20.6		744.7	88	7.9	120.1	110	8.33	0.0781	0.06	7.11	-17.5	192.2					
	15-9-2023	1320	2	20.2		744.4	81	7.4	120.4	109.5	8.3	0.0783	0.06	7.09	-16	199.6					
	15-9-2023	1317	2.63		21																
	15-9-2023	1323	4	20.1		744.4	80	7.2	120.6	109.2	8.29	0.0784	0.06	7.04	-12.9	211.1					
	15-9-2023	1327	6	19		744.2	54	5	129.4	114.2	7.74	0.084	0.06	6.58	13.5	230.8					
	15-9-2023	1332	7.75	16.9		744.3	10	1	149.9	126.7	6.64	0.0982	0.07	6.49	18.6	-16.8					
6.9	27-7-2023	1257	surface	25.7		734.3	90	7.4	147.2	149.5	6.78	0.0964	0.07	7.42	-23.9	214	2.13	45.4834	-79.88064	271.5	
			2.13		4																
		1304	3	24		732.3	79	6.6	170.4	167.3	5.87	0.1108	0.08	7.02	0.3	235.4					
		1307	6	15.5		732.4	21	2.1	202.4	164.6	4.97	0.1314	0.1	6.31	41.3	251.6					
7.1 m	31/5/2023	1850	surface	26.5		739.6	94	7.6	144.9	149.3	6.89	0.0944	0.07	7.3	-21.7	231.3	2.75	45.4831	-79.88082	273.09	
			2.75		14																
		1856	6.0 m	13.2		739.5	71	7.5	163.4	126.9	6.08	0.1072	0.08	6.71	13.3	251					
										Ms/c cm											
		1221	surface	23.32	< 30		102	8.67		0.038		0.025	0.02	6.94		210.9					
		1220	1	22.83			95.2	8.2		0.038		0.025	0.02	6.83		195.5					
		1218	3	22.35			73.7	6.73		0.038		0.025	0.02	6.64		142					
		1217	5	21.14			43.5	3.94		0.038		0.026	0.02	6.45		98.9					
8.2m	28/8/2022	1215	7	15.02	< 30		3.9	0.31		0.047		0.026	0.02	6.45		-7.2					

L Great Bay, Manitouwabing Lake

Lake Manitouwabing, McKellar ON				Great Bay																	
Site	Date	Time	Depth	Temp °C	Total Phos	Calcium	Barr Pres	DO %	DO	SPC	C µS/cm	K Ωcm	TDS g/L	Sal	pH	pH	ORP	secchi	Lat	Long	Alt
depth	D/M/Y	24 h	(m)		mcg/L	MLC mg/L	MLC mm Hg		mg/L	µS/cm	conductivi	resistance		ppT		mV	mV	m			
36.4 m	10-9-2023	853	surface	21.7			746.8	90	7.9	119	111.4	8.41	0.077	0.06	7.2	-22.5	156.2	3.63	45.4752	-79.8989	271.5
	10-9-2023	858	1	21.7			746.8	84	7.3	118.7	111.2	8.43	0.077	0.06	7.2	-23.2	163.8				
	10-9-2023	900	2	21.6			746.8	85	7.3	118.6	111	8.43	0.077	0.06	7.2		172				
	10-9-2023	902	3	21.5			746.9	84	7.4	118.7	110.7	8.43	0.077	0.06	7.2	-21.5	182.1				
	10-9-2023	929	3.63			13															
	10-9-2023	905	4	21			747	76	6.9	118.8	109.9	8.42	0.077	0.06	6.9	-4.1	192.9				
	10-9-2023	907	5	20.7			747	71	6.5	119.1	109.3	8.39	0.077	0.06	6.8	1.4	200.5				
	10-9-2023	909	6	19.2			746.9	56	5.2	126.8	112.5	8.25	0.083	0.06	6.5	17.4	208.9				
	10-9-2023	912	7	15			747	6	0.6	132.1	107	7.56	0.086	0.06	6.1	39.3	236.4				
	10-9-2023	914	8	12.2			747	7	0.8	136.6	103	7.32	0.089	0.07	6.1	39.2	246.4				
	10-9-2023	917	9	11.4			746.9	9	0.9	135.4	100.3	7.38	0.088	0.07	6.1	38.7	246.6				
	10-9-2023	920	10	10.9			746.9	12	1.4	135.3	98.8	7.39	0.088	0.06	6.1	38.6	244.3				
	10-9-2023	923	11	10.3			746.6	16	1.8	135.4	97.4	7.38	0.088	0.06	6.1	38	246.5				
	10-9-2023	927	12	9.6			746.3	24	2.7	136.2	96.1	7.35	0.089	0.06	6.2	36.7	244.3				
	10-9-2023	929	13	9.1			746.1	25	2.9	136.6	95.2	7.33	0.089	0.06	6.2	36.4	249.1				
	10-9-2023	932	14	8.3			746.1	33	3.8	138.2	94.1	7.22	0.09	0.07	6.2	35	253.1				
	10-9-2023	934	15	7.6			745.6	35	4.2	139.3	93.2	7.17	0.09	0.07	6.2	34.6	257				
	10-9-2023	937	16	7.3			745.3	35	4.2	139.5	92.8	7.14	0.091	0.07	6.2	34.7	260.2				
	10-9-2023	940	17	6.9			744.8	33	4	140	91.6	7.1	0.091	0.07	6.2	34.8	268.4				
	10-9-2023	943	18	6.7			744.7	33	4.1	141.4	92	7.07	0.092	0.07	6.2	35	269.8				
	10-9-2023	946	19	6.5			745	31	3.8	139.8	91	7.14	0.092	0.07	6.2	35.6	274.7				
	10-9-2023	949	20	6.4			745	31	3.8	167.4	109.1	5.93	0.111	0.08	6.2	36.1	276.3				
	10-9-2023	954	21	6.3			745.1	28	3.4	248.1	159.4	4.04	0.161	0.12	6.2	36.9	279.3				
	10-9-2023	957	22	6.3			745.3	25	3.1	254.6	163.3	3.9	0.167	0.12	6.1	37.6	280.6				
	10-9-2023	959	23	6.2			745.3	21	2.7	261.4	167	3.85	0.169	0.12	6.1	37.9	293.6				
	10-9-2023	1001	24	6.1			745.4	19	2.4	261.9	167.1	3.83	0.17	0.12	6.1	38.1	290.9				
	10-9-2023	1005	25	6.1			745.3	18	2.2	294.3	188.1	3.41	0.192	0.13	6.1	38	288.3				
	10-9-2023	1009	26	6.1			745.1	17	2.1	301.4	191.3	3.32	0.196	0.14	6.1	38	293.1				
	10-9-2023	1012	27	6.1			744.8	16	2	298.6	189.4	3.34	0.195	0.14	6.1	38.2	300.4				
	10-9-2023	1015	28	6.1			744.8	15	1.8	304.6	192.3	3.29	0.198	0.14	6.1	38.3	286.7				
	10-9-2023	1017	29	6			744.7	11	1.4	304.9	192.5	3.28	0.198	0.14	6.1	38.6	292.6				
	10-9-2023	1020	30	6		24	744.5	9	1.1	305.9	194.5	3.24	0.201	0.15	6.1	38.6	290.6				

[illegible]

M Hurdville Arm, Manitouwabing Lake

Lake Manitouwabing, McKellar ON				Sunnyside Park Dr / ! Smith Pine Cres				Hurdville Arm												
Site	Date	Time	Depth	Temp °C	Total Phos	Barr Pres	DO %	DO	SPC	C μS/cm	K Ωcm	TDS g/L	Sal	pH	pH	ORP	secchi	Lat	Long	Alt
depth	D/M/Y	24 hr	(m)		mcg/L	MLCA mm Hg		mg/L	μS/cm	conductivity	resistance			mV	mV	mV	m			
14 m	10-9-2023	1048	surface	21.7		743.4	88	7.6	118.8	111.4	8.42	0.077	0.06	7.12	-18	217.7	2.63	45.46671	-79.9012	273.6
	10-9-2023	1051	2	21.6		742.8	85	7.5	118.5	110.7	8.44	0.077	0.06	7.13	-18.4	219.4				
	10-9-2023	1105	2.63		16															
	10-9-2023	1054	4	21.7		742.6	78	6.9	135.1	125.6	7.36	0.089	0.07	6.89	-4.2	221.3				
	10-9-2023	1057	6	19.3		741.9	53	4.8	187.6	166.3	5.36	0.121	0.09	6.52	17.5	232.8				
	10-9-2023	1102	8	12		741	1	0.1	216.5	162	4.63	0.14	0.1	6.37	24.8	-7.8				
	10-9-2023	1107	10	9.5		740.1	0	0	216.3	152.7	4.61	0.141	0.1	6.62	10.6	-75.9				
	10-9-2023	1113	12	9		739.8	-1	-0.1	260.8	181.3	3.83	0.17	0.12	6.68	7.3	-119				
	10-9-2023	1117	14	9	29	739.6	-1	-0.1	262.3	182.4	3.81	0.171	0.12	6.68	7.1	-131				
12.8	24-7-2023	1700	surface	25.7		734	94	7.6	116.5	117.8	8.6	0.075	0.06	7.27	-15.1	169.5	2.34	45.46634	-79.9013	264.6
			2.34		6															
		1705	4	22.4		734.2	79	6.9	116.4	110.7	8.55	0.076	0.06	6.82	11.6	195.7				
		1708	8	11.4		734.6	25	2.7	129.8	95	7.74	0.084	0.06	6.22	45.8	235.1				
		1720	11		20															
		1719	12	8.8		735.2	0	0.1	144	99.4	6.94	0.094	0.07	6.69	18.8	-40.8				
11.8m	28/5/2023	1518	surface	19.1		736.7	110	10	31.4	27.9	31.94	0.02	0.02	7.35	-24.5	196.5	1.9m	45.4716	-79.9037	
			1.9		38															
		1523	5	13.5		737.3	98	10	112.2	87.6	8.96	0.073	0.05	6.93	0.2	230.6				
		1527	10	13.8	49	737.2	61	6.4	143.3	113	7.03	0.092	0.07	6.57	21.2	246.4				
12.5m	29/08/2022	1626	surface	23.78	< 30		103	8.7		0.038		0.025	0.02	6.89		206.7				
		1625	2m	22.48			83	7.3		0.038		0.025	0.02	6.67		172.6				
		1623	7m	10.8			18.4	2.1		0.035		0.023	0.02	6.38		118				
		1621	12m	9.86	< 30		9.4	2		0.085		0.055	0.04	6.68		-20.3				

N Hurdville Rd, LPP 23, Manitouwabing Lake

Lake Manitouwabing, McKellar ON					LPP Site 23		Hurdville Rd																		
Site	Date	Time	Depth	Temp °C	Total Phos	Calcium	Barr Pres	SPC	C µS/cm	K Ωcm	TDS g/L	Sal	DO %	DO	pH	pH	ORP	secchi	Phos	Calcium	Cl	Lat	Long	Alt	
depth	D/M/Y	24 hr	(m)		mcg/L	MLCA	mg/L	MLCA	mm Hg	µS/cm	conductivity	resistance	ppT	mg/L	mV	mV	mV	m	mcg/L LPP	mg/L LPP	mg/L LPP				
10 m	28/05/2023	1358	surface	19.6					737.7	29.9	26.8	33.9	0.0194	0.02	101	9.3	7.19	14.6	186.3	1.4 m				45.43820438	-79.9098878
			1.4		12																				
		1406	5m	14.3					737.4	30.5	24.3	32.75	0.0199	0.02	86	8.7	6.8	9	220.3						
		1411	9m	9					738.1	110.9	77	9.02	0.072	0.05	17	2	6.26	38.4	260.1						
	2022																		x	x					
	02-Jun-21																		11.5	4.1	0.5				
	10-Oct-20																		11.2	4.2	2.5				

O Hurdville Dam, Manitouwabing Lake

Lake Manitouwabing, McKellar ON Hurdville Dam																						
Site	Date	Time	Depth	Temp °C	Total Phos	Calcium	TDS	Barr Pres	DO %	DO	SPC	C μS/cm	K Ωcm	TDS g/L	Sal	pH	pH	ORP	secchi	Lat	Long	Alt
depth	D/M/Y	24 hr	m		mcg/L MLCA	mg/L MLCA	mg/L	mm Hg		mg/L	μS/cm	conductivity	resistance		ppT		mV	mV	m			
2.4 m	10-9-2023	1209	surface	21.7				741.7	102	8.9	117.6	110.1	8.5	0.0765	0.06	7.02	-11.9	161.6	1.94	45.44118	-79.91981	271.32
	10-9-2023	1214	1	21.1				741.2	82	7.3	116.7	108.1	8.57	0.0758	0.06	7.01	-11.3	170.4				
		1212	1.94		17	4.53																
	10-9-2023	1217	2	21				740.7	81	7.2	116.3	107.5	8.59	0.0756	0.06	6.96	-8.5	170.3				
2.6m	24-7-2023	1540	surface	26.4				735.5	86	6.9	114	116.9	8.78	0.0736	0.06	7.19	-9.9	163.3	1.55m	45.44073	-79.91982	273.25
		1544	1.55m		6																	
		1548	2 m	25				733.4	87	7.3	116.5	111.5	8.96	0.0725	0.06	7.17	-8.7	179.3				
2.9m	28/5/2023	1320	surf	18.6				739.6	95	8.6	30.8	27.1	32.47	0.02	0.02	7.24	-17.5	161.2	1.36	45.44119	-79.91987	266.63
			1.36		18	3.84	17															
		1326	2 m	15.3				739.1	90	9	30.6	24.9	32.71	0.0199	0.02	7.1	-9.7	175.5				
												Ms/c cm										
5.4m	1/9/2022	1353	surface	21.71	< 30	4.75			86.5	7.61		0.04		0.026	0.02	6.86		312.8				
		1351	2	20.74					78.4	7.07		0.039		0.026	0.02	6.99		314.3				
		1350	4	20.32					80.6	7.29		0.039		0.026	0.02	7.09		309.4				

P South Tait, Manitouwabing Lake

Lake Manitouwabing		McKellar, ON		South Tait																	
Site	Date	Time	Depth	Temp °C	Total Phos	Calcium	Barr Pres	DO %	DO	SPC	C µS/cm	K Ωcm	TDS g/L	Sal	pH	pH	ORP	secchi	Lat	Long	Alt
depth	D/M/Y		m		mcg/L	MLCA	mm Hg		mg/L	µS/cm	conductivity	resistance		ppT		mV	mV	m			
11.5 m	11-9-2023	1041	surface	21.9			743	89	7.7	121.1	113.9	8.26	0.0787	0.06	7.26	-26.3	167.9	2.77	45.4705	-79.91949	
		1046	2	21.7			742.9	79	6.9	121.1	113.2	8.26	0.0786	0.06	7.22	-23.7	180.7				
		1049	2.77		13																
		1051	4	21.2			742.1	75	6.7	121	112.3	8.26	0.0786	0.06	6.94	-7.2	196.7				
		1056	6	18.8			741.5	44	4.1	123.7	109.2	8.09	0.0804	0.06	6.46	20.8	219.7				
		1102	8	12.9			741.4	4	0.4	133.5	101.1	7.61	0.0854	0.06	6.15	37.5	241.1				
		1108	10	10.9			739.9	0	0	158.3	115.9	6.32	0.1031	0.08	6.78	1.4	-36.8				
		1112	11	10.9	20		738.8	0	0	159.6	116.5	6.27	0.1036	0.08	6.82	-0.4	-56.1				
17.4	26-7-2023	1659	surface	25.5			735.5	90	7.5	116.2	117.4	8.61	0.0755	0.06	7.41	-22.9	171.4	2.53	45.4692	-79.918	268.53
		1659	2.53		< 2																
		1702	5	13.9			735.2	28	2.9	126.9	100.4	7.86	0.0828	0.06	6.33	39.8	226.7				
		1710	10	10.3			735.1	26	2.9	167.2	120.2	5.98	0.1086	0.08	6.3	41.2	245.9				
		1721	15	9.2	8		734.3	2	0.2	183.7	128.1	5.46	0.1189	0.09	6.85	10.4	-83.4				
14 m	28/5/2023	1604	surface	19			737.1	108	9.9	32.2	28.4	31.07	0.0209	0.02	7.4	-27.2	192.3	2.08	45.4704	-79.91882	
			2.08		14																
		1612	5	17.2			737.2	78	7.5	111.7	94.8	8.94	0.0726	0.06	6.94	0	222.8				
		1617	10	12.1			738.1	59	6.3	117.3	88.8	8.51	0.0764	0.06	6.55	22.2	242.6				
		1621	13	11	19		738.5	43	4.7	121	88.4	8.25	0.0786	0.06	6.39	31.2	250.8				
											Ms/c cm										
10.7 m	1/9/2022	1237	9	15.83	< 30			22.8	2.31		0.037		0.024	0.02	6.58		194.5				
		1239	6	20.82				72.9	6.45		0.038		0.025	0.02	6.74		245.2				
		1241	3	21.03				81	7.28		0.38		0.025	0.02	6.87		260.7				
		1243	surface	21.62	< 30			92.5	8.14		0.038		0.025	0.02	6.99		268.9				

Q Pine Point Trail, LPP 8, Manitouwabing Lake

Lake Manitouwabing		McKellar ON		LPP site 8		Pine Point Trail																		
Site	Date	Time	Depth	Temp	Total Phos	Calcium	Barr Pres	SPC	C μS/cm	K Ωcm	TDS g/L	Sal	DO %	DO	pH	pH mV	ORP	secchi	Phos	Calcium	Cl	Lat	Long	Alt
depth	D/M/Y	24 h	(m)	°C	mcg/L MLCA	mg/L MLCA	mm Hg	μS/cm	conductivity	resistance	ppT						mV	m	mcg/L LPP	mg/L LPP	mg/L			
7.7 m	4/6/2023	1145	surface	23.3			737.9	107.6	104	9.32	0.0698	0.05	89	7.6	7.28	-20.1	191.5	2.11				45.46683	-79.91813	269.65
			2.11		11																			
		1151	3	16.7			738.4	110.2	93	9.09	0.0714	0.05	97	9.4	7.21	-15.8	198.9							
		1157	7	9.7			737.3	108.7	76.9	9.19	0.0707	0.05	59	6.7	6.47	26.7	157.7							
		1204	2.11																					
	2022																		x					
	24-Apr-21																		12.2	4.2	2.2			
	12-Jul-05																							
	19-May-19																		11.1	3.3	2			
	20-May-18																		13.1	3.6	1.8			
	23-May-17																		12	3.6	2.1			
	19-May-16																		9	3.3	1.8			
	05-Jun-15																		9.4	3.5	1.8			
	18-May-14																		11.5	3.6				
	01-Jun-13																		14.8	3.2				
	22-May-12																		7.7	4				
	24-Apr-11																		13.4	3.9				
	27-May-10																		10	3.4				
	05-May-09																		11.2					
	11-May-08																		12.7	3.7				
	21-May-07																		9.9					
	14-May-06																		10.2					
	07-May-05																		14.1					
	08-May-04																		11.9					
	04-May-03																		13.3					
	05-May-02																		10.2					

R Island Rd, Manitouwabing Lake

Lake Manitouwabing			Island Rd		McKellar		ON		Canada											
Site	Date	Time	Depth	Temp °C	Total Phos	Barr Pres	DO %	DO	SPC	C μS/cm	K Ωcm	TDS g/L	Sal	pH	pH	ORP	secchi	Lat	Long	Alt
depth	D/M/Y	24 hr	(m)		mcg/L	MLCA mm Hg		mg/L	μS/cm	conductivity	resistance		ppT		mV	mV	m			
5.4 m	11-9-2023	1000	surface	21.9		744.4	88	7.6	122.9	115.3	8.16	0.0796	0.06	7.17	-20.7	143.9	2.67	45.4828	-79.92434	274.62
		1005	1	21.6		744	86	7.7	121.6	113.8	8.22	0.0791	0.06	7.19	-21.9	161.8				
		1008	2	21.6		744	83	7.3	121.6	113.7	8.22	0.0791	0.06	7.19	-21.9	177.5				
		1011	2.67		8															
		1013	3	21.4		743.3	73	6.5	122.2	113.8	8.18	0.0795	0.06	7.08	-15.4	190.2				
		1016	4	20.9		742.9	73	6.4	123.1	113.5	8.12	0.0801	0.06	6.9	-4.6	205.4				
		1020	5	19.8		742.6	5	0.4	130.7	117.6	7.65	0.0849	0.06	6.31	29.9	209.5				
5.6	26-7-2023	1738	surface	25.7		734.3	91	7.3	151.5	153.9	6.59	0.0988	0.08	7.4	-22.4	187.2	2.82	45.4827	-79.92451	269.22
		1747	2.82		10															
		1750	2	25.4		734.3	83	6.8	169.6	170.8	5.9	0.1102	0.08	7.38	-21.1	201.9				
		1754	5	16.7		734.2	8	0.8	207.7	174.5	4.83	0.1344	0.1	6.31	41.8	240.9				
5.9 m	4/6/2023	1105	surface	23.1		743.3	89	7.6	92.4	88.9	10.82	0.0601	0.05	7.44	-29.8	160.5	2.44	45.4827	-79.92471	274.1
			2.44		6															
		1111	3	17.1		742.4	97	9	103.1	87.5	9.72	0.0609	0.05	7.15	-12.4	195.7				
		1116	5	11.8		741.9	29	3	116.3	86.9	8.6	0.755	0.06	6.52	24.3	228.8				
									Ms/c cm											
10m	2/9/2022	1619	9	21.36			3.7	0.28	0.039			0.028	0.02	6.79		98.9				
		1621	7	21.22			1.7	0.15	0.041			0.026	0.02	6.8		73.1				
		1613	5	21.79			88.8	7.77	0.039			0.025	0.02	7.14		267.2				
		1610	4	22.45			86.4	7.62	0.039			0.025	0.02	6.64		360.8				
		1608	2	22.29			92.2	7.99	0.039			0.025	0.02	7.08		335.8				
		1605	surf	22.69	< 30		96.4	8.33	0.039			0.035	0.02	7.22		321.4				

S Manitouwabing River Inlet

Manitouwabing River Inlet			McKellar Tovnship			McKellar ON			Canada												
Site	Date	Time	Depth	Temp	Total Phos	Calcium	Barr Pres	DO %	DO	SPC	C μS/cm	K Ωcm	TDS g/L	Sal	pH	pH	ORP	secchi	Lat	Long	Alt
depth	D/M/Y	24 hr	(m)	°C	mcg/L MLCA	mg/L MLCA	mm Hg		mg/L	μS/cm	conductivity	resistance		ppT		mV	mV	m			
5.7 m	9-9-2023	1650	surface	23.5			741.3	94	7.9	116.1	113	8.62	0.0754	0.06	7.13		183.4	2.17	45.47169	-79.88567	271.72
	9-9-2023	1653	1	22.3			740.9	88	7.7	116	110	8.62	0.0755	0.06	7.15		186.7				
	9-9-2023	1655	2	21.8			740.8	88	7.7	116	108.9	8.62	0.0753	0.06	7.15		188.4				
	9-9-2023	1656	2.17			19															
	9-9-2023	1657	3	21.6			740.9	82	7.2	115.6	108	8.65	0.0752	0.06	7.02		191.8				
	9-9-2023	1659	4	21			740.8	74	6.6	116.3	107.4	8.6	0.0755	0.06	6.82		198.5				
	9-9-2023	1703	5	20.1			740.9	45	4.1	123.6	112	8.11	0.0808	0.06	6.44		85.5				
5.5	25-07-2023	1800	surface	28.2			738	96	7.7	113.4	115.9	8.82	0.0737	0.06	7.42	-24.1	192.9	1.27	45.47161	-79.88557	271.92
	25-07-2023	1803	1.27			8															
	25-07-2023	1804	2	25.3			737.6	90	7.4	112.8	113.2	8.87	0.0733	0.06	7.1	-3.8	200.4				
	25-07-2023	1807	5	16.5			737.4	3	0.3	124.3	106	8.11	0.0798	0.06	6.33	41.2	127				
5.8 m	29/5/2023	1446	surface	24.1			737	95	8	41	40.3	24.39	0.0267	0.03	7.11	-10.3	214.4	1.92	45.472384	-79.887073	
			1.92			18															
		1451	5 m	14.5			735.6	82	8.4	197.9	158.6	5.04	0.1291	0.01	6.8	8.4	224.2				
5.6 m	28/8/2022	1033	surface	22.5	< 30			94.7	8.2				0.024	0.02	6.98		222.5				
		1032	1m	22.34				80.9	7.17				0.024	0.02	6.84		162.7				
		1031	2m	21.95				67.8	5.59				0.024	0.02	6.62		93				
		1030	3m	21.84				61.4	4.23				0.024	0.02	6.55		-34.5				
		1029	4m	21.57				60.4	6.03				0.031	0.02	6.59		-81.1				
		1027	5m	21.51	< 30			4.8	0.54				0.036	0.02	6.63		-76.7				

T Jones Bay, LPP 13, Manitouwabing Lake

[illegible]

U Stewart Park, Manitouwabing River

Lake Manitouwabing McKellar ON Stewart Park																					
Site	Date	Time	Depth	Temp	Total Phos	Calcium	Barr Pre	DO %	DO mg/L	SPC	C µS/cm	K Ωcm	TDS g/L	Sal	pH	pH	ORP	secchi	Lat	Long	Alt
depth	D/M/Y	24 h	m	°C	mcg/L MLCA	mg/L MLCA	mm Hg			µS/cm	conductivity	resistance		ppT		mV	mV	m			
4.8 m	9-9-2023	1550	surface	24.4			743.3	83	6.8	113	111.7	8.86	0.0733	0.06	6.92		157	1.41	45.45997	-79.8555	272.56
	9-9-2023	1553	1 m	22			742.3	80	6.9	114.5	108.4	8.73	0.0747	0.06	6.86		163.7				
	9-9-2023	1555	1.41	21.6	15	4.83	741.9	76	6.6	113.9	106.6	8.79	0.074	0.06	6.81		179.7				
	9-9-2023	1559	2	21.4			741.5	75	6.6	113.3	105.5	8.82	0.0737	0.6	6.78		182.3				
	9-9-2023	1602	3	20.9			741.6	69	6.1	113.3	104.5	8.83	0.0736	0.06	6.71		193.2				
	9-9-2023	1604	4	19.9			741.2	36	3.4	114.9	103.9	8.69	0.0748	0.06	6.39		206.8				
4.9	25-7-2023	1714	surface	27.4			736.2	100	7.8	110.6	115.6	9.05	0.0718	0.06	7.38	-21.5	188.6	1.06	45.45996	-79.8556	269.14
	25-7-2023	1720	1.06		10																
	25-7-2023	1721	2	24.5			736.9	79	6.6	112	111.2	8.92	0.0729	0.06	7	1.5	205				
	25-7-2023	1724	4	21.5			737.1	5	0.05	112.7	104.9	8.85	0.0745	0.06	6.31	41.6	117.9				
4 m	29/5/2023	1257	surface	21.9			733.8	95	8.4	27.5	26	36.34	0.0179	0.02	7.04	-5.3	176.4	1.47	45.46008	-79.85604	
			1.47		14																
		1307	3 m	18			734.1	75	7	30.4	26.3	32.89	0.0197	0.02	6.73	12.6	199.5				
										Ms/c cm											
3 m	28/08/2022	1452	surface	22.5	< 30			2.1	1.99	0.037			0.023	0.02	6.81		-73.8				