

Clarity, Phosphorus and Calcium Testing

McKellar Township*

Posted August 12 2024

* Sites tested were: the lakes currently being monitored for E.coli, sites chosen for the Lake Capacity study of 2021, and current sites for testing for the Ontario Government's Lake Partner Program in McKellar Township.

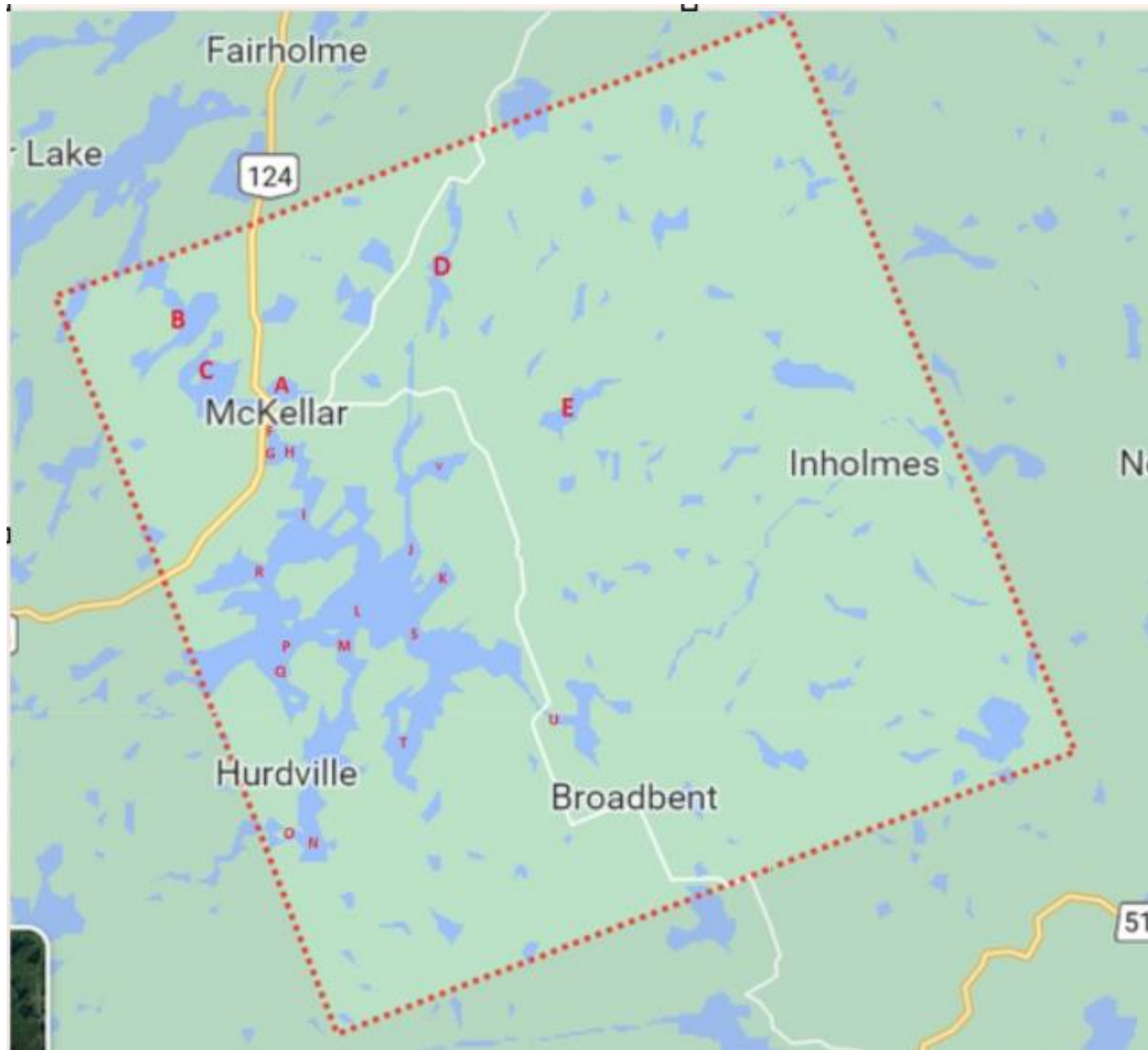


Lake Partner Program data can be found at <https://data.ontario.ca/dataset/ontario-lake-partner>

Researchers looking to use this data will find it on the DataStream web page at the DOI link :

<https://doi.org/10.25976/168q-zm19> . Unlike so many other links on the internet, this one is assured to never break, and will always resolve back to this dataset.

This [documentation page](#) explains how to find and explore the McKellar Lakes data page (the graph and the map) on the Great Lakes DataStream.



- A** Armstrong Lake
- B** Grey Owl Lake
- C** McKellar Lake
- D** Moffat Lake
- E** Mary Jane Lake
- F** Minerva
- G** McKellar Bay LPP 19
- H** Boat Launch LPP 18
- I** McKellar Narrows
- J** Luigs/Camp Rds
- K** Inn Rd
- L** Great Bay
- M** Hurdville Arm
- N** Hurdville Rd LPP 23
- O** Hurdville Dam
- P** South Tait
- Q** Pine Point Tr LPP 8
- R** Island Rd
- S** Manitouwabing River Inlet
- T** Jones Bay LPP 13
- U** Stewart Park
- V** Robinson Bay

A Armstrong Lake

Armstrong Lake		McKenzie		ON		Canada																
Site	Date	Time	Depth	Temp	Total Phos	Calcium	Barr Pres	DO %	DO mg/L	SPC	C μS/cm	K Ωcm	TDS g/L	Sal	pH	pH	ORP	secchi	Lat	Long	Alt	
depth	D/M/Y	24 hr	m	°C	mcg/L MLCA	mg/L MLCA	mm Hg			μS/cm	conductivity	resistance		ppT		mV	mV	m				
13.4 m	25-7-2024	1623	surface	24.7																		
	25-7-2024	1627	1	24.5				741.8	90	7.3	139.7	138.7	7.16	0.0907	0.07	7.4	-36.2	159.4	2.145	45.51299	-79.91754	275.15
	25-7-2024	1631	2.1	23.6	10			742	86	7.1	139.5	138.1	7.17	0.0906	0.07	7.41	-36.6	154.5				
	25-7-2024	1635	4	13.9				742.1	75	6.3	142.6	138.9	7.01	0.0926	0.07	7.18	-23.3	158.5				
	25-7-2024	1638	6	8.9				742.1	32	3.3	162.5	128.3	6.16	0.1054	0.08	6.41	20.5	181.7				
	25-7-2024	1642	8	7.2				741.9	32	3.6	199.5	137.4	5.04	0.1287	0.09	6.43	18.6	195.4				
	25-7-2024	1645	10	6.5				741.3	26	3	195.5	128.7	5.13	0.1264	0.09	6.41	19.6	209.1				
	25-7-2024	1648	12	6.1				741.5	2	0.2	205.1	132.4	4.89	0.1328	0.1	6.37	21.5	173				
	25-7-2024	1648	12	6.1				741.8	1	0.2	228.7	146	4.38	0.1482	0.11	6.63	7.1	-31.4				
25-7-2024	1651	13	6.1				741.8	1	0.2	228.7	146	4.38	0.1482	0.11	6.63	7.1	-31.4					
25-7-2024	1651	13	6.1				742.2	1	0.1	227.9	145.5	4.39	0.1479	0.11	6.66	6	-53.8					
13.3 m	24-5-2024	1506	surface	21.3				735.7	93	8	103.9	96.9	9.62	0.0675	0.05	7.36	-28.7	229.3	2.07	45.5129	-79.91765	273.17
	24-5-2024	1512	2.1	17.7	9	4.9		735	109	10.3	102.9	88.2	9.73	0.0669	0.05	7.51	-36.7	225.6				
	24-5-2024	1514	6	7.3				734	80	9.3	104.9	69.3	9.53	0.0681	0.05	7.03	-8.3	248.5				
	24-5-2024	1517	12	5				733	23	2.9	125.8	78.3	7.72	0.0865	0.06	6.51	19.7	77.4				
12 m	13/9/2023	1014	surface	20.6				741.4	87	7.8	186.6	171	5.36	0.1213	0.09	7.3	-28.1	149.8	2.74	45.51286	-79.91765	277.3
	13/9/2023	1020	1	20.6				741.3	89	7.9	186.5	170.8	5.36	0.1212	0.09	7.3	28.4	165.9				
	13/9/2023	1019	2.74		26	4.76																
	13/9/2023	1024	3	20.6				741.6	84	7.6	186.4	170.6	5.37	0.1211	0.09	7.28	-27	175.6				
	13/9/2023	1030	6	8.4				741.9	16	1.9	210.6	143.2	4.76	0.1364	0.1	6.26	30.9	218				
	13/9/2023	1035	9	6				742	0	0	237.6	151.1	4.22	0.1538	0.11	6.25	30.7	91.4				
	13/9/2023	1038	11	5.7				742.1	-1	-0.1	269.3	170.2	3.71	0.175	0.13	6.53	15.2	-43.6				
12 m	25/7/2023	1413	surface	26.5				735.6	89	7.2	217.1	222.9	4.61	0.1408	0.11	7.54	-30.09	154.3	2.57	45.51278	-79.91762	276.52
	25/7/2023	1418	2.57		2																	
	25/7/2023	1424	5	9.6				736.5	39	4.4	239.9	169.6	4.18	0.1551	0.11	6.45	32.8	196.2				
	25/7/2023	1428	10	6.2				736.5	3	0.4	275.2	177.9	3.61	0.1782	0.13	6.64	23	76.6				
12 m	28/5/2023	840	surface	17.8				745.6	92	8.8	101.6	87.7	9.84	0.066	0.05	7.41	-27.7	150.5	2.29	45.51248	-79.91768	274.49
	28/5/2023	838	2.29		18	4.66																
	28/5/2023	846	1	17.7				745.8	89	8.4	101.5	87.4	9.85	0.066	0.05	7.38	-26	161				
	28/5/2023	853	5	7.1				745.1	71	8.5	103.8	68.3	9.64	0.0674	0.05	6.66	15.8	213.9				
	28/5/2023	901	10	5				743.3	22	2.8	204.3	128.9	4.78	0.1365	0.1	6.42	29.8	241.8				

B Grey Owl Lake

Grey Owl Lake																					
Site	Date	Time	Depth	Temp	Total Phos	Calcium	Barr Pres	DO %	DO mg/L	SPC	C μS/cm	K Ωcm	TDS g/L	Sal	pH	pH	ORP	secchi	Lat	Long	Alt
depth	D/M/Y	24 hr	m	°C	mcg/L MLCA	mg/L MLCA	mm Hg			μS/cm	conductivity	resistance		ppT		mV	mV	m			
5.6 m	25-7-2024	1224	surface	24.5			741.9	91	7.5	96.8	95.7	10.35	0.0628	0.05	7.35	-32.3	107.3	2.62	45.52519	-79.94134	278.4
	25-7-2024	1230	1	24.2			741.8	88	7.3	96.5	95	9.55	0.0628	0.05	7.31	-30.6	130.5				
	25-7-2024	1233	2	24.1			741.7	85	7	104.3	102.3	9.51	0.0676	0.05	7.25	-27.3	139.2				
	25-7-2024	1242	2.6	23.8	6		740.5	70	5.8	108.8	106.2	9.2	0.0707	0.06	7.12	-19.6	148.9				
	25-7-2024	1239	3	23.5			740.9	66	5.5	106.4	103.8	9.4	0.0691	0.05	7.13	-21.1	145.2				
	25-7-2024	1245	4	18.5			740.8	7	0.6	129.9	113.9	7.72	0.0842	0.06	6.27	29.3	168.1				
	25-7-2024	1248	5	15.3			741	1	0.1	176.6	145.3	5.65	0.1159	0.09	6.57	9.4	33.3				
6.2	24-5-2024	1036	surface	19.9			735.4	100	8.8	45.2	40.8	22.1	0.0294	0.03	7.27	-23.2	177.5	2.61	45.52522	-79.94121	273.91
	24-5-2024	1045	2.7	18.5	8	5.01	735.9	89	7.8	44.4	38.9	22.54	0.0288	0.03	7.09	-12.4	198.3				
	24-5-2024	1050	5	10.4			736.1	1	0.1	67	48.1	15.01	0.0432	0.03	6.62	13.4	-13.1				
5 m	13-9-2023	1500	surface	21			741.5	85	7.6	127.8	118	7.82	0.0832	0.06	7.08	-15.4	174.8	2.54	45.52514	-79.94125	275.74
	13-9-2023	1506	1	20.9			741.6	80	6.9	128.5	118.6	7.78	0.0835	0.06	7.08	-15.2	187.4				
	13-9-2023	1511	2	20.9			741.5	74	6.7	128.7	118.7	7.77	0.0837	0.06	7.05	-13.8	192.9				
	13-9-2023	1504	2.54		16	4.44															
	13-9-2023	1514	3	20.9			741.6	81	7.3	128.8	118.7	7.77	0.0837	0.06	7.05	-13.5	196				
	13-9-2023	1518	4	20.8			741.7	76	6.8	129.3	119	7.73	0.0841	0.06	6.89	-4.5	209.2				
	13-9-2023	1521	4.5	20.6			741.7	59	5.2	130.2	119.3	7.68	0.0887	0.07	6.53	15.8	180				
5	"25-07-2023	1123	surface	25.3			739.4	89	7.4	127.4	127.7	7.85	0.0828	0.06	7.45	-25.1	187.4	3.28	45.52571	-79.94181	273.06
		1129	2	24.7			738.4	83	6.8	127.3	126.6	7.86	0.0828	0.06	7.39	-21.8	197.5				
			3.28		< 2 mcg/L																
		1136	4	20.8			738.3	61	5.5	130.4	120	7.68	0.0846	0.06	6.64	22.7	218.3				
5	"23-06-2023	10:22	1.14		5													1.14	45.52532	-79.94168	278.03
5.2 m	1/6/2023	1215	surface	23.9			737.9	91	7.8	134	131.1	7.45	0.0872	0.07	7.5	-32.9	200.7	2.34	45.5269	-79.94281	276.2
			2.34		105	4.33															
		1222	3 m	16.6			737.6	91	8.9	152.4	127.8	6.59	0.0985	0.07	7.33	-22.1	202.8				
		1232	5 m	12.2			738.8	27	2.7	156.3	118	6.41	0.1012	0.07	6.42	29.8	178.1				

C McKellar Lake

McKellar Lake																					
Site	Date	Time	Depth	Temp	Total Phos	Calcium	Barr Pres	DO %	DO mg/L	SPC	C μS/cm	K Ωcm	TDS g/L	Sal	pH	pH	ORP	secchi	Lat	Long	Alt
depth	D/M/Y	24 hr	m	°C	mcg/L	MLCA mg/L	MLCA mm Hg			μS/cm	conductivity	resistance		ppT		mV	mV	m			
7.5	25-7-2024	1508	surface	24.3			744.2	91	7.3	95.1	93.7	10.53	0.0617	0.05	7.31	-30.8	149.5	2.66	45.51049	-79.92764	271.23
	25-7-2024	1511	1	24.3			744	88	7.2	95	93.8	10.51	0.0618	0.05	7.31	-30.9	153.2				
	25-7-2024	1516	2.6	24.2	7		742.4	73	6	103.4	101.9	9.67	0.0676	0.05	7.3	-30.2	153.4				
	25-7-2024	1519	3	24.2			741.6	72	6	107	105.4	9.31	0.0698	0.05	7.3	-30.5	152				
	25-7-2024	1522	5	13.8			741.4	5	0.5	138.2	108.6	7.23	0.0899	0.07	6.3	26.7	181.4				
	25-7-2024	1526	7	10.2			741.4	1	0.1	188.7	141.6	5.05	0.1276	0.09	6.93	-8.7	-66.4				
7.1 m	24-5-2024	1635	surface	22			735.5	96	8.3	44.3	41.8	22.52	0.0289	0.03	7.32	-25.9	178.5	4.11m	45.5102	-79.92742	271.7
	24-5-2024	1642	3.2	15.2	6	4.51	735.5	94	9.1	43.7	35.6	22.79	0.0286	0.02	7	-7.3	195.7				
	24-5-2024	1649	6	9.3			736.1	52	5.8	52.8	37.1	18.96	0.0341	0.03	6.55	17.7	219.6				
6.5 m	13-9-2023	1127	surface	20.9			743.4	91	8.1	131	120.8	7.63	0.0852	0.07	7.04	-13.3	150.6	2.97	45.50983	-79.92511	274.36
	13-9-2023	1131	2.97		17	4.34															
	13-9-2023	1132	1	20.9			743.4	91	8.2	131.6	121.3	7.6	0.0855	0.07	7.09	-15.9	159.9				
	13-9-2023	1137	3	20.9			743.4	86	7.7	131.4	121.2	7.61	0.0854	0.07	7.09	-15.9	168.4				
	13-9-2023	1140	5	19.3			743.3	48	4.6	141.6	127.3	7.05	0.0924	0.07	6.44	21.2	194.4				
	13-9-2023	1143	6	14.3			743	1	0.1	158.2	126.9	6.29	0.1035	0.08	6.24	32.7	215.7				
6.5	25/7/2023	1529	surface	26			736.7	99	8	132.3	134.7	7.57	0.0857	0.07	7.57	-32.8	152.6	3.34	45.50996	-79.92498	271.99
		1536	2	24.1			736.9	97	8.1	120.3	127	7.73	0.0841	0.06	7.51	-28.6	170.7				
			3.41		5																
		1541	5	11.5			737.3	8	0.9	159.8	121	6.12	0.0151	0.08	6.69	17.2	129.1				
6.5 m	1/6/2023	1340	surface	24.8			738.5	92	7.6	133.8	132.9	7.48	0.0867	0.07	7.34	-23.9	212	4.18	45.50987	-79.92487	274.1
			4.18		25	3.9															
		1346	3 m	16.4			738.4	87	8.6	154	128.7	6.49	0.1003	0.08	7.06	-6.9	229.7				
		1358	6 m	9.6			738	30	3.5	165.1	116.4	6.06	0.107	0.08	6.41	30.5	247.3				

D Moffat Lake

Moffat Lake																					
Site	Date	Time	Depth	Temp	Total Phos	Calcium	Bar Pres	DO %	DO mg/L	SPC	C μS/cm	K Ωcm	TDS g/L	Sal	pH	pH	ORP	secchi	Lat	Long	Alt
depth	D/M/Y	24 hr	m	°C	mcg/L	MLCA mg/L	mm Hg			μS/cm	conductivity	resistance		ppT		mV	mV	m			
3.5 m	23-7-2024	1226	surface	26			740.6	88	6.7	92.4	93.9	10.85	0.062	0.05	6.96	-10.6	124	1.31	45.53416	-79.88059	270.16
	23-7-2024	1231	1.3	24.2	15		738.9	64	5.2	104	102.1	9.63	0.0676	0.05	6.69	5.5	152.3				
	23-7-2024	1234	2	23.7			737.9	47	3.9	105.3	102.6	9.49	0.0685	0.05	6.5	16.3	161.6				
	23-7-2024	1237	3	19.8			737.5	1	0.1	118	105.9	8.5	0.0764	0.06	6.26	29.7	74.2				
3.5 m	22-5-2024	1122	surface	21.2			731.2	94	8.1	25.7	23.8	38.97	0.0167	0.02	7.01	-8.5	156.7	2.25	45.53368	-79.88083	275.53
	22-5-2024	1127	2.25	20.8	9	4.38	731.2	90	7.9	26.3	23.3	38.83	0.0167	0.02	6.95	-4.8	172.4				
	22-5-2024	1132	3	14.3			730.8	70	6.9	20.5	19.8	39.93	0.0161	0.02	6.51	20.8	186.8				
3.3 m	8-9-2023	1529	surface	21.8			743.2	90	7.9	111	104.3	9.01	0.0721	0.06	7.06		210.1	1.52	45.54126	-79.87771	273.16
	8-9-2023	1533	1	21.8			743.3	77	6.8	110.9	104.1	9.02	0.0721	0.06	7.03		215.8				
	8-9-2023	1540	1.52	21.4	20	5.42	743.3	73	6.4	110.3	102.8	9.09	0.0716	0.06	6.87		226				
	8-9-2023	1535	2	20.9			743.2	55	4.9	111.9	103.1	8.94	0.0727	0.06	6.6		230.7				
	8-9-2023	1537	3	19.8			743.2	36	3	114.7	103.3	8.71	0.0748	0.06	6.42		247.5				
3 m	27-7-2023	1117	surface	26			736.8	92	7.2	115.8	118	8.64	0.0752	0.06	7.33	-18.2	188.1	2.22	45.54128	-79.87777	272.88
	27-7-2023		2.22		7																
	27-7-2023	1121	2	24.7			736.3	75	6.4	115.9	115.6	8.64	0.0751	0.06	6.82	12.4	212				
3.5 m	1-6-2023	1039	surface	24.8			742.6	96	7.9	102.9	102.6	9.71	0.067	0.05	7.24	-18.1	184	2.24	45.54103	-79.87785	271.28
	1-6-2023	2.24			24	3.94															
	1-6-2023	1044	1	20.9			741.9	86	7.7	115.1	106.1	8.7	0.0747	0.06	6.93	0.5	204.3				
	1-6-2023	1052	3	14.7			740.5	60	6.1	129.3	103.5	7.75	0.0838	0.06	6.49	26.2	233.6				

E Mary Jane Lake

Mary Jane Lake		McKella		Township		ON		Canada													
Site	Date	Time	Depth	Temp	Total Phos	Calcium	Barr Pres	DO %	DO mg/L	SPC	C μS/cm	K Ωcm	TDS g/L	Sal	pH	pH	ORP	secchi	Lat	Long	Alt
depth	D/M/Y	24 hr	m	°C	mcg/L	MLCA mg/L	MLCA mm Hg			μS/cm	conductivity	resistance		ppT		mV	mV	m			m
5 m	23-7-2024	1644	surface	26.2			738.2	94	7.4	140.3	143.5	7.13	0.0911	0.07	7.88	-64.6	159.3	2.825	45.5088	-79.85369	290
	23-7-2024	1648	1	24.8			738	87	6.9	141.5	141	7.07	0.0919	0.07	7.84	-62.2	153.4				
	23-7-2024	1652	2	24.4			738	77	6.2	147.8	146	6.77	0.096	0.07	7.79	-58.9	155.3				
	23-7-2024	1704	2.8	24.2	11		737.6	72	5.9	148.1	145.8	6.76	0.0962	0.07	7.69	-53	40.8				
	23-7-2024	1655	3	24.1			737.8	65	5.3	150.5	147.8	6.65	0.0978	0.07	7.66	-51.2	158.2				
	23-7-2024	1658	4	21.6			737.7	27	2.3	155.1	145.1	6.46	0.1007	0.08	6.93	-8.5	170				
	23-7-2024	1701	5	20.1			737.6	7	0.6	234.5	212.3	4.26	0.153	0.11	6.99	-12.2	-70.6				
4.9 m	23-5-2024	1142	surface	20.4			736	109	9.4	67.5	61.6	14.8	0.0439	0.04	8.33	-84.7	143.1	3.06m	45.51126	-79.8491	288.26
	23-5-2024	1150	3.1	15.7	7	14.9	736	115	10.07	67.3	56.2	14.79	0.0436	0.03	7.83	-53.7	164.7				
	23-5-2024	1157	4	10.5			735.2	105	10.3	67.4	54.6	14.87	0.0439	0.04	7.69	-45	180.5				
4.5m	8-9-2023	1200	surface	22.5			740.5	93	8.1	156.6	147.4	6.49	0.1	0.08	7.84		175.4	4.08	45.50864	-79.85369	288.36
	8-9-2023	1202	1	22.5			740.4	90	7.9	154	146.7	6.49	0.1002	0.08	7.92		181.6				
	8-9-2023	1206	2	22.4			740.4	86	7.2	153.5	145.9	6.52	0.0996	0.08	7.91		178.2				
	8-9-2023	1209	3	22.3			740.3	87	7.6	152.8	145.2	6.54	0.094	0.08	7.89		184.7				
	8-9-2023	1212	4	21.7			740.3	84	7.3	152.9	143.3	6.54	0.0992	0.08	7.74		188.6				
	8-9-2023	1210	4.08		29	14.7															
	8-9-2023	1210	4.08		29	14.7															
4.3	26-7-2023	1247	surface	25.4			734.7	93	7.6	157.7	158.9	6.35	0.1023	0.08	7.94	-54.7	155.8	3.45	45.51083	-79.85003	287.68
	26-7-2023	1254	3.45		< 2																
	26-7-2023	1256	3	25			734.2	90	7.4	155.8	155.8	6.42	0.1013	0.08	7.98	-57	164.1				
4 m	29/5/2023	1010	surf	18.7			740.3	102	9.4	67.4	59.6	14.91	0.0436	0.04	8.23	-76.1	150.9	2.61	45.51083	-79.849959	
	29/5/2023		2.61		15	13.1															
	29/5/2023	1015	3 m	17.1			738.5	87	8.3	189	160.8	5.29	0.1229	0.09	7.96	-59.7	163.6				

F Minerva Park, Manitouwabing Lake

Lake Manitouwabing		tip of Minerva Park		McKellar	Ontario	Canada																
Site	Date	Time	Depth (m)	Temp	Total Phos	Calcium	Barr Pres	SPC	C μS/cm	K Ωcm	Ms/c cm	TDS g/L	Sal	DO %	DO mg/L	pH	pH mV	ORP	secchi	Lat	Long	Alt
depth	D/M/Y	24 hr		°C	mcg/L	MLCA mg/L	mm Hg	μS/cm	conductivity	resistance			ppT					mV	m			
1m	1/9/2022	1116	surface	21.24	< 30						0.066	0.043	0.03	101.3	8.9	7.37		246.9	N/A			

G McKellar Bay, LPP 19, Manitouwabing Lake

Manitouabing Lake				McKellar Bay				McKellar				Ontario				Canada							
Site	Date	Time	Depth	Temp	Total Phos	Bar Pres	DO %	DO mg/L	SPC	C μS/cm	K Ωcm	TDS g/L	Sal	pH	pH mV	ORP	secchi	Lat	Long	Alt	Phos	Calcium	Cl mg/L
depth	D/M/Y	24 hr	m	°C	mcg/L MLCA	mm Hg			μS/cm	conductivity	resistance		ppT			mV	m				LPP	LPP	LPP
10m	16-7-2024	1638	surface	26		731.6	108	8.3	51.5	52.5	19.42	0.0334	0.03	7.11	-19.9	113.9	1.7	45.50391	-79.91987	267.78			
	16-7-2024	1641	1.65	26	10	731.7	89	6.9	51.2	52.1	19.52	0.0333	0.03	7.3	-29.9	132.6							
	16-7-2024	1644	3	21.7		730.9	84	7	54	50.3	18.51	0.0351	0.03	7.37	-34.2	155.3							
	16-7-2024	1647	6	13.6		730.8	11	1.1	171.6	129.2	5.82	0.1116	0.08	6.47	13.7	197.6							
	16-7-2024	1652	9	12.6	84	730.3	1	0.1	196.7	148.7	5.05	0.1289	0.09	6.58	8.9	-14.2							
9.7m	30-5-2024	1050	surface	19.3		745	92	8.4	96	85.5	10.41	0.0624	0.05	7.4	-30.5	111.8	2.97	45.5038	-79.92008	270.29			
	30-5-2024	1101	3	18.1	10	745.1	89	8.3	99.1	86.4	10.08	0.0643	0.05	7.2	-19.2	152.7							
	30-5-2024	1105	6	9.4		745.5	55	6.2	105.2	73.7	9.53	0.0679	0.05	6.64	12.4	189.5							
	30-5-2024	1110	9	8.4	25	744	0	0	141.3	95.7	7.16	0.0907	0.07	7.05	-10.6	-66.1							
10 m	15-9-2023	1150	surface	20.4		743.2	82	7.3	140.4	128	7.13	0.0911	0.07	7.11	-17.3	152.7	3.05	45.50374	-79.92007	272.67			
	15-9-2023	1157	1	19.9		742.1	86	7.8	139.5	125.9	7.17	0.0907	0.07	7.1	-16.5	168.7							
	15-9-2023	1202	2	19.8		741.6	85	7.7	139.3	125.4	7.18	0.0905	0.07	7.1	-16.6	180.4							
	15-9-2023	1150	3.05		3																		
	15-9-2023	1206	4	19.7		743	78	7	139.2	125	7.19	0.0905	0.07	7.11	-17.3	185.3							
	15-9-2023	1209	6	12.6		743.5	5	0.5	159.2	121.2	6.29	0.1027	0.08	6.24	32.8	220.5							
	15-9-2023	1215	8	8.7		743.3	0	0	186.2	128.5	5.37	0.1211	0.09	6.67	8	-14.7							
	15-9-2023	1159	9		15																		
9.6	23-7-2023	1133	surface	24.9		733.1	92	7.3	134.4	133.5	7.47	0.0869	0.07	7.51	-28.4	46.8	2.6	45.50475	-79.92088				
	23-7-2023		2.6		2																		
	23-7-2023	1126	3	24.6		735	93	7.7	139.9	139.3	7.12	0.0913	0.07	7.53	-30.2	164.8							
	23-7-2023	1130	7	11.2	2	734.3	9	1.5	192	140.5	5.22	0.1237	0.09	6.88	8.6	44.4							
9.6 m	31-5-2023	1555	surface	24.8		738.6	100	8.1	57.6	57.3	17.37	0.0374	0.03	7.49	-33.1	183	2.37	45.50374	-79.91994				
	31-5-2023		2.37		11																		
	31-5-2023	1612	5 m	9.9		735.1	63	7	167.2	119.3	5.98	0.1087	0.08	6.62	18.5	205.5							
	31-5-2023	1617	9 m	8.1	12	735.5	16	1.9	174.5	118.1	5.74	0.1132	0.08	6.42	29.4	166.3							
9.3 m	1/9/2022	1104	surface	21.73	160 mcg/L		102	8.97		Ms/c cm		0.43	0.03	7.33		193.7							
		1102	3	21.6			88.5	7.89		0.66		0.43	0.03	7.18		151.2							
		1059	6	10.89			5.1	0.47		0.067		0.044	0.03	7.85		80.1							
	1/9/2022	1055	9	7.2	< 30 mcg/L		2	0.24		0.13		0.082	0.06	7.1		-129.9	3 m						
	04-Jun-21																				13	4.3	9.4
	19-Jun-19																				11	3.2	5.7
	24-May-18																				10.1	4	6.3
	23-May-17																				11.3	3.9	5.9
	24-May-16																				11	3.9	

H Lakeshore Rd Boat Launch LPP 18 Manitouwabing Lake

[illegible]

I McKellar Narrows, Manitouwabing Lake

Lake Manitouwabing, McKellar ON																						0			
Site	Date	Time	Depth	Temp	Total Phos	Calcium	Barr Press	DO	DO	SPC	µS/cm	C	µS/cm	K	Ωcm	TDS	g/L	Sal	pH	pH mV	ORP	secchi	Lat	Long	Alt
depth	D/M/Y	24 hr	m	°C	mcg/L	MLCA	mg/L	MLCA	mmHg	%	mg/L	conductivity		resistance	ppT		mV		m						
2.6 m	21-7-2024	1546	surface	26.7				737.9	93	7.1	53	54.7	18.85	0.0344	0.03	7.15	-21.5	134	2.29	45.49152	-79.9149	272.68			
		1549	1	25.4				738.2	89	7	52	52.6	19.25	0.0338	0.03	7.19	-23.7	136.9							
		1553	2	25.2	12			738.2	72	5.7	124.1	125.1	8.03	0.0813	0.06	7.1	-18.4	139.9							
2.6 m	30-5-2024	941	surface	18.8				747.3	81	7.4	56.3	49.7	17.75	0.0366	0.03	7.17	-17.3	125.2	2.15	45.49159	-79.9148	272.41			
	30-5-2024	944	1	18.5				747.7	77	7.1	56.1	49.1	17.83	0.0365	0.03	7.14	-15.6	141.2							
	30-5-2024	950	2	18.4	14	4.92		748.2	79	7.4	55.9	48.8	17.9	0.0363	0.03	7.14	-13.6	158.3							
2 m	"15-9-2023	1100	surface	19.5				747.1	75	6.8	134.2	119.6	7.46	0.087	0.07	6.92	-6.1	168.5	N/A	45.49157	-79.91497	275.38			
		1106	1	18.5	19	4.79		745.6	75	7.1	140.6	123.1	7.11	0.0914	0.07	6.89	-4	179.1							
		1111	2	18.4				747.8	76	7.1	140.3	122.6	7.13	0.0912	0.07	6.87	-2.9	186.7							
1.1m	27-7-2023	1127	surface	26.3				733.6	88	7.1	130.9	133.8	7.65	0.0849	0.07	7.22	-11.8	201.8	N/A	45.49177	-79.91456	271.4			
		1132	1	25.7	10			733.6	91	7.5	128.2	129.1	7.83	0.0831	0.06	7.34	-19.3	200.5							
2 m	31/5/2023	1723	surf	26				738	93	7.5	150.8	153.4	6.64	0.0978	0.07	7.26	-18.9	204.7	N/A	45.49094	-79.91546				
		1733	1.5 m	20.2	13	4.36		737.7	101	9	169.2	154	5.91	0.1099	0.08	7.73	-45.7	194.7							
												Ms/c cm													
2.1 m	1/9/2022	1346	1	20.04				89.7	8.07			0.059		0.038	0.03	7.26		277.2							
		1348	surface	21.03	< 30			90.8	8.12			0.053		0.034	0.02	7.15		260.7							

J Luigis/Camp Rds, Manitouwabing Lake

Manitouwabing Lake, McKellar ONLuigis Lane / Camp Rd																				
Site	Date	Time	Depth	Temp °C	Total Phos	Barr Pres	DO %	DO	SPC	C μS/cm	K Ωcm	TDS g/L	Sal	pH	pH mV	ORP	secchi	Lat	Long	Alt
depth	D/M/Y	24 h	(m)		mcg/L MLCA	mm Hg		mg/L	μS/cm	conductivity	resistance		ppT		mV		m			
17.5	21-7-2024	1730	surface	25.5		738.7	94	7.5	152.9	154.6	6.54	0.0996	0.08	7.23	-26.2	123.1	2.16	45.48525	-79.89076	269.47
	21-7-2024	1733	2.1	24.2	7	738.6	81	6.5	136.6	134.2	7.33	0.0885	0.07	7.17	-22.2	134				
	21-7-2024	1737	4	23.2		737.9	57	4.7	134.9	130.1	7.42	0.0875	0.07	6.8	-1.2	152.4				
	21-7-2024	1740	8	12.5		738	30	3.1	149.5	112.9	6.71	0.0963	0.07	6.33	24.8	183.5				
	21-7-2024	1744	12	10.9		737.9	36	3.9	149.6	109.1	6.7	0.0968	0.07	6.36	22.7	198.3				
	21-7-2024	1747	16	8.9		738.1	39	4.4	155.3	107.4	6.46	0.1006	0.07	6.37	22.1	206.7				
16m	26-5-2024	1337	surface	20.4		734	101	8.9	34.1	31.1	29.34	0.0222	0.02	7.22	-20.1	179.4	2.3	45.48559	79.88078	274.75
		1342	2.3	18	17	733.3	93	8.5	35.1	30.4	28.41	0.0228	0.02	7.11	-13.9	170.7				
		1348	5	13		733.2	86	8.8	58.1	44.8	17.29	0.0375	0.03	6.81	3.5	186.3				
		1352	10	8.8		733.1	85	9.5	92.2	63.5	10.88	0.0594	0.04	6.69	9.9	200.1				
		1356	15	10.6		733.7	66	7.1	196.9	142.9	5.08	0.1277	0.09	6.66	11.8	193.9				
18 m	11-9-2023	1148	surface	22.9		742.7	92	7.9	122.5	116.8	8.15	0.0797	0.06	7.26	-25.9	125.3	3.08	45.48529	-79.89054	272.62
		1151	2	21.5		742.1	87	7.9	120.4	112.5	8.3	0.0784	0.06	7.23	-24.5	139.5				
		1200	3.08		18															
		1156	4	21.3		741.9	88	7.7	119.6	111.1	8.37	0.0777	0.06	7.14	-19.2	158.7				
		1204	6	19.2		741.4	58	5.4	120.1	106.8	8.33	0.078	0.06	6.56	14.9	194.2				
		1207	8	12.8		740.9	7	0.7	129.7	99.2	7.71	0.0842	0.06	6.12	39.5	219.1				
		1210	10	11		740.3	11	1.2	130	95.3	7.69	0.0844	0.06	6.13	38.6	219.3				
		1213	12	9.4		739.6	24	2.8	139.2	97.5	7.19	0.0903	0.07	6.17	36.2	221.6				
		1215	14	8.5		739.3	30	3.5	140.1	95.8	7.15	0.0908	0.07	6.19	35	225.5				
		1218	16	7.7		738.5	31	3.7	140.9	94.2	7.1	0.0915	0.07	6.19	34.8	230.7				
		1221	18	7.2		737.8	27	3.3	156.4	103.4	6.36	0.1027	0.07	6.24	31.7	226.5				
20.1 m	27-7-2023	1212	surface	25.7		732.4	93	7.6	115.3	116.8	8.67	0.0749	0.06	7.37	-20.7	223.7	2.73	45.48452	-79.89112	272.62
		1215	2.73 m		8															
		1220	5 m	18		733.7	34	3.2	121.1	105.1	8.27	0.0787	0.06	6.4	36.4	262.1				
		1223	10 m	10.8		733.6	35	4	129	94.2	7.78	0.0836	0.06	6.34	39.1	264.5				
		1228	15 m	7.6		733.9	50	6	131	87.5	7.63	0.085	0.06	6.39	35.7	263.8				
		1234	19m	6.8		734.1	45	5.5	154.7	100.4	6.46	0.1007	0.07	6.36	37.4	267.8				
18.3 m	31/5/2023	1805	surface	24.8		738.2	97	7.9	145.5	145.1	6.87	0.0946	0.07	7.44	-30.1	208.7	2.2	45.48513	-79.89083	271.23
			2.2		8															
		1812	5	14.9		738.3	84	8.4	164.4	131.8	6.12	0.1061	0.08	6.95	-0.05	240.7				
		1821	10	9.9		738.7	69	7.8	162	115.3	6.17	0.1055	0.08	6.57	21	257.1				
		1825	15	8.3		738.9	67	7.9	162.5	110.5	6.16	0.1054	0.08	6.54	22.5	263				
		1829	17	7.7		738.9	61	7.2	161.6	108	6.18	0.1051	0.08	6.49	25.4	266.8				
9m	30/8/2022	933	surface	23.18	< 30			99	8.45		Ms/c cm	0.038	0.02	7.09		251.7				
		931	4m	23.1				86.2	7.53		0.038	0.025	0.02	6.99		217.4				
		929	8m	12.18				24.2	2.45		0.036	0.023	0.02	6.01		241.8				

K Inn Rd, Manitouwabing Lake

Manitouwabing Lake, McKellar ONCanadaInn Rd																				
Site	Date	Time	Depth	Temp °C	Total Phos	Barr Pres	DO %	DO	SPC	C µS/cm	K Ωcm	TDS g/L	Sal	pH	pH	ORP	secchi	Lat	Long	Alt
depth	D/M/Y	24 h	(m)		mcg/L MLCA	mm Hg		mg/L	µS/cm	conductivity	resistance		ppT		mV	mV	m			
8.8 m	21-7-2024	1810	surface	25.4		739.6	91	7.3	96.9	97.9	10.32	0.0633	0.05	7.31	-31.3	151.4	1.845	45.4832	-79.8807	271.25
	21-7-2024	1814	1.8	24.4	9	739.5	81	6.6	108.7	107.6	9.2	0.0707	0.06	7.21	-25.3	157				
	21-7-2024	1818	4	23.4		739.5	60	4.9	127.9	124	7.82	0.083	0.06	6.9	-7.1	171				
	21-7-2024	1821	6	15.3		739.2	19	1.9	137.1	111.2	7.34	0.0885	0.07	6.29	27.1	189.1				
	21-7-2024	1824	8	14.1		739	12	1.2	145.9	115.4	6.86	0.0948	0.07	6.56	11.3	37.6				
7m	26-5-2024	1302	surface	20.7		736.1	95	8.3	38.6	35.5	25.86	0.0251	0.02	7.21	-20.2	153.8	2.5	45.48321	-79.88091	273.38
	26-5-2024	1305	2.5	17.5	14	735.7	91	8.5	39.1	33.6	25.47	0.0255	0.02	6.99	-6.1	174.6				
	26-5-2024	1311	4.5	14.5		734.8	82	8.1	52.6	42	19.03	0.0341	0.03	6.79	4.2	187.7				
	26-5-2024	1314	6.5	9.9		734.4	64	7	53.1	37.7	18.88	0.0344	0.03	6.55	18.6	205.9				
8 m	15-9-2023	1311	surface	21.1		745.3	95	8.4	119.2	110.1	8.39	0.0775	0.06	7.1	-16.6	177	2.63	45.48319	-79.88072	268.81
	15-9-2023	1317	1	20.6		744.7	88	7.9	120.1	110	8.33	0.0781	0.06	7.11	-17.5	192.2				
	15-9-2023	1320	2	20.2		744.4	81	7.4	120.4	109.5	8.3	0.0783	0.06	7.09	-16	199.6				
	15-9-2023	1317	2.63		21															
	15-9-2023	1323	4	20.1		744.4	80	7.2	120.6	109.2	8.29	0.0784	0.06	7.04	-12.9	211.1				
	15-9-2023	1327	6	19		744.2	54	5	129.4	114.2	7.74	0.084	0.06	6.58	13.5	230.8				
	15-9-2023	1332	7.75	16.9		744.3	10	1	149.9	126.7	6.64	0.0982	0.07	6.49	18.6	-16.8				
6.9	27-7-2023	1257	surface	25.7		734.3	90	7.4	147.2	149.5	6.78	0.0964	0.07	7.42	-23.9	214	2.13	45.48335	-79.88064	271.5
			2.13		4															
		1304	3	24		732.3	79	6.6	170.4	167.3	5.87	0.1108	0.08	7.02	0.3	235.4				
		1307	6	15.5		732.4	21	2.1	202.4	164.6	4.97	0.1314	0.1	6.31	41.3	251.6				
7.1 m	31/5/2023	1850	surface	26.5		739.6	94	7.6	144.9	149.3	6.89	0.0944	0.07	7.3	-21.7	231.3	2.75	45.48312	-79.88082	273.09
			2.75		14															
		1856	6.0 m	13.2		739.5	71	7.5	163.4	126.9	6.08	0.1072	0.08	6.71	13.3	251				
										Ms/c cm										
		1221	surface	23.32	< 30		101.6	8.67		0.038		0.025	0.02	6.94		210.9				
		1220	1	22.83			95.2	8.2		0.038		0.025	0.02	6.83		195.5				
		1218	3	22.35			73.7	6.73		0.038		0.025	0.02	6.64		142				
		1217	5	21.14			43.5	3.94		0.038		0.026	0.02	6.45		98.9				
8.2m	28/8/2022	1215	7	15.02	< 30		3.9	0.31		0.047		0.026	0.02	6.45		-7.2				

L Great Bay, Manitouwabing Lake

Lake Manitouwabing, McKellar ON				Great Bay																
Site	Date	Time	Depth	Temp °C	Total Phos	Barr Pres	DO %	DO	SPC	C μS/cm	K Ωcm	TDS g/L	Sal	pH	pH	ORP	secchi	Lat	Long	Alt
depth	D/M/Y	24 h	(m)		mcg/L MLCA	mm Hg		mg/L	μS/cm	conductivity	resistance		ppT		mV	mV	m			
35.7 m	18-7-2024	1628	surface	24.4		741.6	94	7.7	39.5	39.1	25.31	0.0257	0.03	7.23	-25.7	101.9	1.436	45.4752	-79.89873	276.31
	18-7-2024	1633	1.3	24.9	11	741.5	83	6.8	41.3	41.2	24.24	0.0268	0.03	7.23	-26.1	117				
	18-7-2024	1637	5	16.3		741.5	28	2.7	149.2	124.8	6.68	0.0983	0.07	6.36	23.6	153				
	18-7-2024	1641	10	11.4		741.4	34	3.6	150.1	110.6	6.69	0.0968	0.07	6.35	23.3	185.7				
	18-7-2024	1644	15	9.2		741.2	40	4.5	149.5	104.2	6.74	0.0967	0.07	6.4	20.5	213.4				
	18-7-2024	1647	20	8		740	37	4.2	145.1	97.6	6.88	0.0948	0.07	6.36	22.9	233.6				
	18-7-2024	1652	25	7.6		739.2	34	3.9	149.3	99.8	6.62	0.0983	0.07	6.32	24.5	223.3				
	18-7-2024	1656	30	7.4	14	738.4	32	3.7	147.8	98.3	6.69	0.0963	0.07	6.3	26	222.8				
34.4 m	29-5-2024	1044	surface	18.2		743.9	99	9.1	37.3	32.4	26.81	0.0243	0.02	7.25	-21.7	141.3	2.79	45.47528	-79.89901	272.47
	29-5-2024	1047	2.79	18.5	8	742.1	90	8.2	69.6	61.2	14.35	0.0457	0.04	7.24	-21.1	155.1				
	29-5-2024	1051	5	14.6		740.9	73	7.2	78.3	62.4	12.79	0.0508	0.04	6.79	5.3	178.6				
	29-5-2024	1056	10	11.2		740.6	69	7.4	86.5	63.6	11.62	0.0558	0.04	6.65	10.8	202.9				
	29-5-2024	1100	15	9.7		740.8	71	7.9	91.9	64.9	10.89	0.0593	0.04	6.66	10.9	228.8				
	29-5-2024	1105	20	8.7		741.2	71	8	91.7	63.6	10.83	0.0597	0.04	6.62	13.3	236.1				
	29-5-2024	1108	25	7.9		741.3	68	7.8	93.7	62.6	10.85	0.0613	0.04	6.58	15.9	255.5				
	29-5-2024	112	30	7.6	14	740.2	66	7.7	168.7	112.2	5.99	0.1083	0.08	6.56	17.1	265.9				

Lake Manitouabing, McKellar ON				Great Bay																	
Site	Date	Time	Depth	Temp °C	Total Phos	Barr Pres	DO %	DO	SPC	C μS/cm	K Ωcm	TDS g/L	Sal	pH	pH	ORP	secchi	Lat	Long	Alt	
depth	D/M/Y	24 h	(m)		mcg/L	MLCA	mm Hg	mg/L	μS/cm	conductivity	resistance			ppT	mV	mV	m				
36.4 m	10-9-2023	853	surface	21.7			746.8	90	7.9	119	111.4	8.41	0.0773	0.06	7.2	-22.5	156.2	3.63	45.47518	-79.8989	271.52
	10-9-2023	858	1	21.7			746.8	84	7.3	118.7	111.2	8.43	0.0772	0.06	7.21	-23.2	163.8				
	10-9-2023	900	2	21.6			746.8	85	7.3	118.6	111	8.43	0.0771	0.06	7.23		172				
	10-9-2023	902	3	21.5			746.9	84	7.4	118.7	110.7	8.43	0.0772	0.06	7.18	-21.5	182.1				
	10-9-2023	929	3.63			13															
	10-9-2023	905	4	21			747	76	6.9	118.8	109.9	8.42	0.0772	0.06	6.89	-4.1	192.9				
	10-9-2023	907	5	20.7			747	71	6.5	119.1	109.3	8.39	0.0774	0.06	6.79	1.4	200.5				
	10-9-2023	909	6	19.2			746.9	56	5.2	126.8	112.5	8.25	0.0825	0.06	6.52	17.4	208.9				
	10-9-2023	912	7	15			747	6	0.6	132.1	107	7.56	0.0861	0.06	6.13	39.3	236.4				
	10-9-2023	914	8	12.2			747	7	0.8	136.6	103	7.32	0.0886	0.07	6.12	39.2	246.4				
	10-9-2023	917	9	11.4			746.9	9	0.9	135.4	100.3	7.38	0.0881	0.07	6.13	38.7	246.6				
	10-9-2023	920	10	10.9			746.9	12	1.4	135.3	98.8	7.39	0.0879	0.06	6.13	38.6	244.3				
	10-9-2023	923	11	10.3			746.6	16	1.8	135.4	97.4	7.38	0.0882	0.06	6.14	38	246.5				
	10-9-2023	927	12	9.6			746.3	24	2.7	136.2	96.1	7.35	0.0885	0.06	6.16	36.7	244.3				
	10-9-2023	929	13	9.1			746.1	25	2.9	136.6	95.2	7.33	0.0887	0.06	6.16	36.4	249.1				
	10-9-2023	932	14	8.3			746.1	33	3.8	138.2	94.1	7.22	0.0895	0.07	6.18	35	253.1				
	10-9-2023	934	15	7.6			745.6	35	4.2	139.3	93.2	7.17	0.0904	0.07	6.19	34.6	257				
	10-9-2023	937	16	7.3			745.3	35	4.2	139.5	92.8	7.14	0.0906	0.07	6.19	34.7	260.2				
	10-9-2023	940	17	6.9			744.8	33	4	140	91.6	7.1	0.0912	0.07	6.18	34.8	268.4				
	10-9-2023	943	18	6.7			744.7	33	4.1	141.4	92	7.07	0.0915	0.07	6.18	35	269.8				
	10-9-2023	946	19	6.5			745	31	3.8	139.8	91	7.14	0.0915	0.07	6.17	35.6	274.7				
	10-9-2023	949	20	6.4			745	31	3.8	167.4	109.1	5.93	0.1108	0.08	6.16	36.1	276.3				
	10-9-2023	954	21	6.3			745.1	28	3.4	248.1	159.4	4.04	0.1608	0.12	6.15	36.9	279.3				
	10-9-2023	957	22	6.3			745.3	25	3.1	254.6	163.3	3.9	0.1674	0.12	6.13	37.6	280.6				
	10-9-2023	959	23	6.2			745.3	21	2.7	261.4	167	3.85	0.1688	0.12	6.13	37.9	293.6				
	10-9-2023	1001	24	6.1			745.4	19	2.4	261.9	167.1	3.83	0.1704	0.12	6.12	38.1	290.9				
	10-9-2023	1005	25	6.1			745.3	18	2.2	294.3	188.1	3.41	0.1919	0.13	6.12	38	288.3				
	10-9-2023	1009	26	6.1			745.1	17	2.1	301.4	191.3	3.32	0.1961	0.14	6.13	38	293.1				
	10-9-2023	1012	27	6.1			744.8	16	2	298.6	189.4	3.34	0.1945	0.14	6.12	38.2	300.4				
	10-9-2023	1015	28	6.1			744.8	15	1.8	304.6	192.3	3.29	0.1982	0.14	6.12	38.3	286.7				
	10-9-2023	1017	29	6			744.7	11	1.4	304.9	192.5	3.28	0.1978	0.14	6.11	38.6	292.6				
	10-9-2023	1020	30	6		24	744.5	9	1.1	305.9	194.5	3.24	0.2013	0.15	6.12	38.6	290.6				
35.7	24-7-2023	1820	surface	25			738.1	94	7.8	108.5	108.6		0.0708	0.06	7.36	209.3		2.66	45.47528	-79.89846	271.85
		1817	2.66			16															
		1815	5	15.1			738.1	30	3	222	179.1		0.1422	0.11	6.32	253.2					
		1812	10	10.3			738	38	4.3	249	179.7		0.1619	0.12	6.29	253.4					
		1809	15	8.3			737.8	53	6.2	274.5	186.8		0.1794	0.13	6.34	257.4					
		1759	20	7			737.4	50	6.1	274.4	179.5		0.1792	0.13	6.31	246.1					
		1755	25	6.5			737.1	46	5.6	284.5	182.8		0.1843	0.13	6.3	251.3					
		1745	30	6.4		11	736	3	3.6	282.3	197.5		0.1991	0.15	6.25	264.1					
34.6m	4/6/2023	1234	surf	23			738.1	99	8.6	112.1	107.7		0.0726	0.06	7.36	195.6		2.04	45.47535	-79.90099	272.5
			2.04			9															
		1239	10	9			737.3	69	8	127	87.9		0.0814	0.06	6.56	234.7					
		1245	20	6.2			736.6	63	7.8	273.6	174.9		0.177	0.13	6.45	237					
		1250	30	5.7			736.5	55	6.9	315	199.6		0.204	0.15	6.41	233.1					
28m	29/8/2022	1558	2	22.91				92.3	8.01		0.038		0.025	0.02	6.64	290.2					
		1556	7	15.38				26	2.5		0.036		0.024	0.02	6.15	312.6					
		1554	12	9.43				37.5	4		0.035		0.022	0.02	6.16	313.5					
		1553	17	6.8				44.9	5.51		0.033		0.021	0.01	6.27	308.4					
		1552	22	5.7				41.1	5.2		0.032		0.021	0.01	6.32	304.8					
		1550	27	5.14	< 30			35.5	4.52		0.033		0.021	0.01	6.45	97.5					
	30/8/2022	918	surf		< 30																

M Hurdville Arm, Manitouwabing Lake

Lake Manitouwabing, McKellar ON				Sunnyside Park Dr / : Smith Pine Cres					Hurdville Arm												
Site	Date	Time	Depth	Temp °C	Total Phos	Barr Pres	DO %	DO	SPC	C µS/cm	K Ωcm	TDS g/L	Sal	pH	pH	ORP	secchi	Lat	Long	Alt	
depth	D/M/Y	24 hr	(m)		mcg/L	MLCA	mm Hg		mg/L	µS/cm	conductivity	resistance			mV	mV	m				
14 m	18-7-2024	1554	surface	24.8																	
	18-7-2024	1557	1.5	24.9	7		742.2	88	7.2	38.6	38.5	25.91	0.0251	0.03	7.21	-24.9	167.2	1.475	45.46684	-79.90121	271.34
	18-7-2024	1602	4	24.3			742.3	80	6.4	42.9	42.8	23.32	0.0279	0.03	7.21	-25.1	164.7				
	18-7-2024	1606	8	11.6			742.3	63	5.2	135.2	133.4	7.42	0.0875	0.07	6.92	-7.2	170.6				
	18-7-2024	1610	12	9.6	59		742.2	13	1.3	160.3	118.7	6.28	0.1026	0.08	6.24	29.7	206.7				
	18-7-2024	1613	14	9.4			741.8	1	0.1	159.7	112.9	6.24	0.1044	0.08	6.46	17.4	36.3				
							741.9	0	0	163.6	114.6	6.12	0.1059	0.08	6.67	5.5	-53.6				
15.2	29-5-2024	1134	surface	18.9			740.2	91	8.2	94.5	83.4	10.58	0.0615	0.05	7.17	-17.3	201.8	2.56	45.46657	-79.90139	268.08
	29-5-2024	1139	2.56	18.8	10		739.8	88	7.9	80.6	71.1	12.41	0.0524	0.04	7.17	-17.8	191.7				
	29-5-2024	1144	5	14.6			738.8	74	7.4	82.7	66.4	12.1	0.0537	0.04	6.75	6.9	195.4				
	29-5-2024	1148	10	8.6			733.2	43	4.9	92.6	63.5	10.83	0.0599	0.04	6.43	23.8	221.3				
	29-5-2024	1153	15	8.3	23		733.3	25	2.8	90.5	61.7	11.06	0.0587	0.04	6.37	27.3	229.6				
14 m	10-9-2023	1048	surface	21.7			743.4	88	7.6	118.8	111.4	8.42	0.0772	0.06	7.12	-18	217.7	2.63	45.46671	-79.90124	273.6
	10-9-2023	1051	2	21.6			742.8	85	7.5	118.5	110.7	8.44	0.0771	0.06	7.13	-18.4	219.4				
	10-9-2023	1105	2.63		16																
	10-9-2023	1054	4	21.7			742.6	78	6.9	135.1	125.6	7.36	0.0885	0.07	6.89	-4.2	221.3				
	10-9-2023	1057	6	19.3			741.9	53	4.8	187.6	166.3	5.36	0.1212	0.09	6.52	17.5	232.8				
	10-9-2023	1102	8	12			741	1	0.1	216.5	162	4.63	0.1395	0.1	6.37	24.8	-7.8				
	10-9-2023	1107	10	9.5			740.1	0	0	216.3	152.7	4.61	0.1411	0.1	6.62	10.6	-75.9				
	10-9-2023	1113	12	9			739.8	-1	-0.1	260.8	181.3	3.83	0.1699	0.12	6.68	7.3	-119.3				
	10-9-2023	1117	14	9	29		739.6	-1	-0.1	262.3	182.4	3.81	0.1705	0.12	6.68	7.1	-131.2				
12.8	24-7-2023	1700	surface	25.7			734	94	7.6	116.5	117.8	8.6	0.0754	0.06	7.27	-15.1	169.5	2.34	45.46634	-79.90125	264.6
			2.34		6																
		1705	4	22.4			734.2	79	6.9	116.4	110.7	8.55	0.0758	0.06	6.82	11.6	195.7				
		1708	8	11.4			734.6	25	2.7	129.8	95	7.74	0.0839	0.06	6.22	45.8	235.1				
		1720	11		20																
		1719	12	8.8			735.2	0	0.1	144	99.4	6.94	0.0938	0.07	6.69	18.8	-40.8				
11.8m	28/5/2023	1518	surface	19.1			736.7	110	10.1	31.4	27.9	31.94	0.0203	0.02	7.35	-24.5	196.5	1.9m	45.4716	-79.90366	
			1.9		38																
		1523	5	13.5			737.3	98	10.2	112.2	87.6	8.96	0.0725	0.05	6.93	0.2	230.6				
		1527	10	13.8	49		737.2	61	6.4	143.3	113	7.03	0.0923	0.07	6.57	21.2	246.4				
12.5m																					
12.5m	29/08/2022	1626	surface	23.78	< 30																
		1625	2m	22.48				103	8.68		0.038		0.025	0.02	6.89		206.7				
		1623	7m	10.8				83	7.31		0.038		0.025	0.02	6.67		172.6				
		1621	12m	9.86	< 30			18.4	2.07		0.035		0.023	0.02	6.38		118				

N Hurdville Rd, LPP 23, Manitouwabing Lake

Lake Manitouwabing, McKellar ON					LPP Site 23 Hurdville Rd																			
Site	Date	Time	Depth	Temp	Total Phos	Calcium	Barr Pres	DO %	DO	SPC	C μS/cm	K Ωcm	TDS g/L	Sal	pH	pH	ORP	secchi	Phos	Calcium	Cl mg/L	Lat	Long	Alt
depth	D/M/Y	24 hr	(m)	°C	mcg/L	MLCA	mm Hg		mg/L	μS/cm	conductivity	resistance		ppT		mV	mV	m	mcg/L LPP	mg/L LPP	LPP			
5.5	29-5-2024	1235	surface	18.9			738.7	90	8	39.7	35.1	25.14	0.0259	0.02	7.1	-14	181.5	1.7	x	x		45.43811	-79.90968	275.6
	29-5-2024	1239	1.7	18.8			738.3	87	7.8	39	34.5	25.56	0.0255	0.02	7.1	-14	181.7							
	29-5-2024	1242	3	18.6			738.4	87	8	41	36.1	24.37	0.0267	0.02	7.1	-10	181							
	29-5-2024	1246	4.5	13.8			738.3	69	3.9	41	32.8	23.96	0.0272	0.02	6.6	13.9	194.7							
10 m	28/05/2023	1358	surface	19.6			737.7	101	9.3	29.9	26.8	33.9	0.0194	0.02	7.2	14.6	186.3	1.4	m			45.43820438	-79.9098878	
			1.4		12																			
		1406	5m	14.3			737.4	86	8.7	30.5	24.3	32.75	0.0199	0.02	6.8	9	220.3							
		1411	9m	9			738.1	17	2	110.9	77	9.02	0.072	0.05	6.3	38.4	260.1							
	24-5-2022																	1.16	9.31	x				
	02-Jun-21																	1.55	11.5	4.1	0.5			
	10-Oct-20																		11.2	4.2	2.5			

O Hurdville Dam, Manitouwabing Lake

Lake Manitouwabing, McKellar ONHurdville Dam																					
Site	Date	Time	Depth	Temp °C	Total Phos	Calcium	Barr Pres	DO %	DO	SPC	C µS/cm	K Ωcm	TDS g/L	Sal	pH	pH	ORP	secchi	Lat	Long	Alt
depth	D/M/Y	24 hr	m		mcg/L MLCA	mg/L MLCA	mm Hg		mg/L	µS/cm	conductivity	resistance		ppT		mV	mV	m			
3 m	18-7-2024	1500	surface	24.7			742.1	86	7	38.8	38.7	25.72	0.0253	0.03	7.01	-13.3	123.9	1.465	45.44119	-79.91972	272.91
	18-7-2024	1506	1.4	24.3	10		741.1	79	6.5	109.1	107.7	9.15	0.071	0.06	7.02	-14	109.7				
	18-7-2024	1509	2.5	23.8			741.1	61	5.2	139.4	136.5	7.15	0.0913	0.07	6.77	0.06	95				
3.2 m	29-5-2024	1304	surface	19.3			742.5	85	7.6	41.5	37	24.08	0.027	0.02	7.01	-8.5	179	1.91	45.44121	-79.91986	273.99
		1310	1.85	18.4	14	4.38	740.3	82	7.5	41.6	3604	24	0.0271	0.02	6.99	-7.3	183.5				
		1314	2.5	17.8			739.5	75	6.9	41.9	36.1	23.88	0.0272	0.02	6.85	1.3	188.2				
2.4 m	10-9-2023	1209	surface	21.7			741.7	102	8.9	117.6	110.1	8.5	0.0765	0.06	7.02	-11.9	161.6	1.94	45.44118	-79.91981	271.32
	10-9-2023	1214	1	21.1			741.2	82	7.3	116.7	108.1	8.57	0.0758	0.06	7.01	-11.3	170.4				
		1212	1.94		17	4.53															
	10-9-2023	1217	2	21			740.7	81	7.2	116.3	107.5	8.59	0.0756	0.06	6.96	-8.5	170.3				
2.6m	24-7-2023	1540	surface	26.4			735.5	86	6.9	114	116.9	8.78	0.0736	0.06	7.19	-9.9	163.3	1.55m	45.44073	-79.91982	273.25
		1544	1.55m		6																
		1548	2 m	25			733.4	87	7.3	116.5	111.5	8.96	0.0725	0.06	7.17	-8.7	179.3				
2.9m	28/5/2023	1320	surf	18.6			739.6	95	8.6	30.8	27.1	32.47	0.02	0.02	7.24	-17.5	161.2	1.36	45.44119	-79.91987	266.63
			1.36		18	3.84															
		1326	2 m	15.3			739.1	90	9	30.6	24.9	32.71	0.0199	0.02	7.1	-9.7	175.5				
											Ms/c cm										
5.4m	1/9/2022	1353	surface	21.71	< 30	4.75		86.5	7.61		0.04		0.026	0.02	6.86		312.8				
		1351	2	20.74				78.4	7.07		0.039		0.026	0.02	6.99		314.3				
		1350	4	20.32				80.6	7.29		0.039		0.026	0.02	7.09		309.4				

P South Tait, Manitouwabing Lake

Lake Manitouwabing McKellar, ON South Tait																					
Site	Date	Time	Depth	Temp °C	Total Phos	Calcium	Barr Pres	DO %	DO	SPC	C µS/cm	K Ωcm	TDS g/L	Sal	pH	pH	ORP	secchi	Lat	Long	Alt
depth	D/M/Y		m		mcg/L	MLCA	mg/L	MLCA	mm Hg		mg/L	µS/cm	conductivity	resistance		ppT		mV	mV	m	
11.1	22-7-2024	1543	surface	25.8			737.7	92	7.3	114.4	116.2	8.75	0.0743	0.06	7.23	-26.1	151.6	1.99	45.47029	-79.91977	265.41
	22-7-2024	1547	1.98	24.5	11		738	79	6.4	115.8	114.7	8.64	0.0751	0.06	7.21	-24.7	149.3				
	22-7-2024	1551	4	23.5			737.8	60	5	118	114.4	8.48	0.0766	0.06	6.93	-8.6	155.4				
	22-7-2024	1554	6	17.2			737.5	27	2.6	128.9	106.3	7.8	0.0829	0.06	6.33	25.2	176.9				
	22-7-2024	1558	8	11.9			737.3	21	2.2	135.9	106.3	7.24	0.0917	0.07	6.57	10.1	41.7				
	22-7-2024	1602	10	11.7	26		737.3	23	2.4	145.6	108.7	6.86	0.0943	0.07	6.62	8.2	17.9				
17.5	31-5-2024	1041	surface	19			746.2	96	8.7	39.8	35.2	25.15	0.0258	0.02	7.26	-22.5	165.2	2.45	45.47025	-79.91869	273.03
			2.5		11																
		1047	5	18.9			744.7	95	8.7	74.6	65.8	13.4	0.0485	0.04	7.27	-22.7	172.4				
		1052	10	11			744.2	73	8	81.2	59.4	12.33	0.0526	0.04	6.67	10.6	206.3				
		1059	15	9.5			743.6	67	7.4	82.1	57.8	12.19	0.0533	0.04	6.58	15.7	221.8				
		1104	17	9	34		743.4	0	0.1	119.6	84.4	8.09	0.0797	0.06	6.91	-2.5	-59.8				
11.5 m	11-9-2023	1041	surface	21.9			743	89	7.7	121.1	113.9	8.26	0.0787	0.06	7.26	-26.3	167.9	2.77	45.47045	-79.91949	
		1046	2	21.7			742.9	79	6.9	121.1	113.2	8.26	0.0786	0.06	7.22	-23.7	180.7				
		1049	2.77		13																
		1051	4	21.2			742.1	75	6.7	121	112.3	8.26	0.0786	0.06	6.94	-7.2	196.7				
		1056	6	18.8			741.5	44	4.1	123.7	109.2	8.09	0.0804	0.06	6.46	20.8	219.7				
		1102	8	12.9			741.4	4	0.4	133.5	101.1	7.61	0.0854	0.06	6.15	37.5	241.1				
		1108	10	10.9			739.9	0	0	158.3	115.9	6.32	0.1031	0.08	6.78	1.4	-36.8				
		1112	11	10.9	20		738.8	0	0	159.6	116.5	6.27	0.1036	0.08	6.82	-0.4	-56.1				
17.4	26-7-2023	1659	surface	25.5			735.5	90	7.5	116.2	117.4	8.61	0.0755	0.06	7.41	-22.9	171.4	2.53	45.46915	-79.918	268.53
		1659	2.53		< 2																
		1702	5	13.9			735.2	28	2.9	126.9	100.4	7.86	0.0828	0.06	6.33	39.8	226.7				
		1710	10	10.3			735.1	26	2.9	167.2	120.2	5.98	0.1086	0.08	6.3	41.2	245.9				
		1721	15	9.2	8		734.3	2	0.2	183.7	128.1	5.46	0.1189	0.09	6.85	10.4	-83.4				
14 m	28/5/2023	1604	surface	19			737.1	108	9.9	32.2	28.4	31.07	0.0209	0.02	7.4	-27.2	192.3	2.08	45.47043	-79.91882	
			2.08		14																
		1612	5	17.2			737.2	78	7.5	111.7	94.8	8.94	0.0726	0.06	6.94	0	222.8				
		1617	10	12.1			738.1	59	6.3	117.3	88.8	8.51	0.0764	0.06	6.55	22.2	242.6				
		1621	13	11	19		738.5	43	4.7	121	88.4	8.25	0.0786	0.06	6.39	31.2	250.8				
											Ms/c cm										
10.7 m	1/9/2022	1237	9	15.83	< 30			22.8	2.31		0.037		0.024	0.02	6.58		194.5				
		1239	6	20.82				72.9	6.45		0.038		0.025	0.02	6.74		245.2				
		1241	3	21.03				81	7.28		0.38		0.025	0.02	6.87		260.7				
		1243	surface	21.62	< 30			92.5	8.14		0.038		0.025	0.02	6.99		268.9				

Q Pine Point Trail, LPP 8, Manitouwabing Lake

Lake Manitouwabing			McKellar ON		LPP site 8				Pine Point Trail																			
Site	Date	Time	Depth	Temp	Total Phos	Calcium	Barr Pres	DO %	DO	SPC	C μS/cm	K Qcm	TDS g/L	Sal	pH	pH mV	ORP	secchi	Phos	Calcium	Cl	Lat	Long	Alt				
depth	D/M/Y	24 h	(m)	°C	mcg/L	MLCA	mg/L	MLCA	mm Hg		mg/L	μS/cm	conductivity	resistance				mV	m	mcg/L	LPP	mg/L	LPP	mg/L				
7.7 m	4/6/2023	1145	surface	23.3			737.9	89	7.6	107.6	104	9.32	0.0698	0.05	7.28	-20.1	191.5	2.11				45.4668	-79.9181	269.65				
			2.11			11																						
		1151	3	16.7			738.4	97	9.4	110.2	93	9.09	0.0714	0.05	7.21	-15.8	198.9											
		1157	7	9.7			737.3	59	6.7	108.7	76.9	9.19	0.0707	0.05	6.47	26.7	157.7											
		1204	2.11																									
	2022																		x									
	24-Apr-21																		12.2	4.2	2.2							
	12-Jul-05																											
	19-May-19																		11.1	3.3	2							
	20-May-18																		13.1	3.6	1.8							
	23-May-17																		12	3.6	2.1							
	19-May-16																		9	3.3	1.8							
	05-Jun-15																		9.4	3.5	1.8							
	18-May-14																		11.5	3.6								
	01-Jun-13																		14.8	3.2								
	22-May-12																		7.7	4								
	24-Apr-11																		13.4	3.9								
	27-May-10																		10	3.4								
	05-May-09																		11.2									
	11-May-08																		12.7	3.7								
	21-May-07																		9.9									
	14-May-06																		10.2									
	07-May-05																		14.1									
	08-May-04																		11.9									
	04-May-03																		13.3									
	05-May-02																		10.2									

R Island Rd, Manitouwabing Lake

Lake Manitouwabing N Island Rd McKellar ON Canada																				
Site	Date	Time	Depth	Temp °C	Total Phos	Barr Pres	DO %	DO	SPC	C μS/cm	K Ωcm	TDS g/L	Sal	pH	pH	ORP	secchi	Lat	Long	Alt
depth	D/M/Y	24 hr	(m)		mcg/L MLCA	mm Hg		mg/L	μS/cm	conductivity	resistance		ppT		mV	mV	m			
4.1	22-7-2024	1506	surface	26.2		738.4	94	7.4	119.4	122.3	8.38	0.0774	0.06	7.2	-24.6	110.6	1.1.868	45.48296	-79.92447	271.2
	22-7-2024	1511	1	24.8		738.4	88	7.1	118.9	118.4	8.42	0.0771	0.06	7.29	-29.9	121.5				
	22-7-2024	1514	1.9	24.4	5	738.4	75	6.1	119.2	117.8	8.4	0.0774	0.06	7.27	-28.4	127.3				
	22-7-2024	1517	3	24		737.8	67	5.4	120.6	118.2	8.29	0.0783	0.06	7.12	-19.7	130.5				
	22-7-2024	1520	4	23.8		736.5	62	5.1	120.7	117.9	8.29	0.0786	0.06	6.88	-4	136.8				
6.1	31-5-2024	1007	surface	18.8		746.9	93	8.6	39.4	34.8	25.38	0.0256	0.02	7.24	-2234	142.6	2.17	45.48276	-79.92462	269.69
	31-5-2024	1012	2.3	18.7	14	745.6	90	8.3	74.8	65.7	13.35	0.0486	0.04	7.24	-21.5	161.9				
	31-5-2024	1016	4	17.4		744.4	84	7.9	71.9	61.5	13.9	0.0468	0.04	7.02	-8.7	172.9				
	31-5-2024	1020	6	11.8		743.8	16	1.7	90	67.4	11.1	0.0587	0.04	6.43	25.1	105.6				
5.4 m	11-9-2023	1000	surface	21.9		744.4	88	7.6	122.9	115.3	8.16	0.0796	0.06	7.17	-20.7	143.9	2.67	45.4828	-79.92434	274.62
		1005	1	21.6		744	86	7.7	121.6	113.8	8.22	0.0791	0.06	7.19	-21.9	161.8				
		1008	2	21.6		744	83	7.3	121.6	113.7	8.22	0.0791	0.06	7.19	-21.9	177.5				
		1011	2.67		8															
		1013	3	21.4		743.3	73	6.5	122.2	113.8	8.18	0.0795	0.06	7.08	-15.4	190.2				
		1016	4	20.9		742.9	73	6.4	123.1	113.5	8.12	0.0801	0.06	6.9	-4.6	205.4				
		1020	5	19.8		742.6	5	0.4	130.7	117.6	7.65	0.0849	0.06	6.31	29.9	209.5				
5.6	26-7-2023	1738	surface	25.7		734.3	91	7.3	151.5	153.9	6.59	0.0988	0.08	7.4	-22.4	187.2	2.82	45.4827	-79.92451	269.22
		1747	2.82		10															
		1750	2	25.4		734.3	83	6.8	169.6	170.8	5.9	0.1102	0.08	7.38	-21.1	201.9				
		1754	5	16.7		734.2	8	0.8	207.7	174.5	4.83	0.1344	0.1	6.31	41.8	240.9				
5.9 m	4/6/2023	1105	surface	23.1		743.3	89	7.6	92.4	88.9	10.82	0.0601	0.05	7.44	-29.8	160.5	2.44	45.48272	-79.92471	274.1
			2.44		6															
		1111	3	17.1		742.4	97	9	103.1	87.5	9.72	0.0609	0.05	7.15	-12.4	195.7				
		1116	5	11.8		741.9	29	3	116.3	86.9	8.6	0.755	0.06	6.52	24.3	228.8				
									Ms/c cm											
10m	2/9/2022	1619	9	21.36			3.7	0.28	0.039			0.028	0.02	6.79		98.9				
		1621	7	21.22			1.7	0.15	0.041			0.026	0.02	6.8		73.1				
		1613	5	21.79			88.8	7.77	0.039			0.025	0.02	7.14		267.2				
		1610	4	22.45			86.4	7.62	0.039			0.025	0.02	6.64		360.8				
		1608	2	22.29			92.2	7.99	0.039			0.025	0.02	7.08		335.8				
		1605	surf	22.69	< 30		96.4	8.33	0.039			0.035	0.02	7.22		321.4				

S Manitouwabing River Inlet

Manitouwabing River Inlet McKellar Tow nship McKellar ON Canada																					
Site	Date	Time	Depth	Temp	Total Phos	Calcium	Barr Pres	DO %	DO	SPC	C μS/cm	K Ωcm	TDS g/L	Sal	pH	pH	ORP	secchi	Lat	Long	Alt
depth	D/M/Y	24 hr	(m)	°C	mcg/L MLCA	mg/L MLCA	mm Hg		mg/L	μS/cm	conductivity	resistance		ppT		mV	mV	m			
5.8m	17-7-2024	1703	surface	25.9			736.1	99	7.8	38.7	39.4	25.8	0.0252	0.03	7.13	-20.6	136	1.38	45.47176	-79.88556	269.43
	17-7-2024	1707	1.4	25.9	14		736.1	95	7.6	39	39.7	25.65	0.0253	0.03	7.13	-20.6	137.7				
	17-7-2024	1712	2.5	25.6			735.8	79	6.3	135.9	137.1	7.39	0.0889	0.07	6.86	-4.7	152				
	17-7-2024	1715	4	25.1			735.8	69	5.5	141.3	141.7	7.07	0.092	0.07	6.73	2.9	159.7				
	17-7-2024	1718	5.5	18.6			735.6	3	0.03	189.2	165.1	5.27	0.1232	0.09	6.66	6.5	-75.1				
6m	26-5-2024	1224	surface	20.1			737	89	7.9	38.5	34.9	25.97	0.0251	0.02	7.07	-11.7	177.9	2	45.47227	-79.8857	270.48
	26-5-2024	1231	2	19	12		737.5	88	7.9	38.5	34.1	26.02	0.025	0.02	7.12	-14.4	187.3				
	26-5-2024	1235	4	14.7			737.2	85	8.4	49.4	39.5	20.3	0.0322	0.03	6.81	3.4	197				
	26-5-2024	1238	5.5	11.9			736.6	59	6.2	53.1	40.1	18.65	0.0353	0.03	6.57	16.7	112.6				
5.7 m	9-9-2023	1650	surface	23.5			741.3	94	7.9	116.1	113	8.62	0.0754	0.06	7.13		183.4	2.17	45.47169	-79.88567	271.72
	9-9-2023	1653	1	22.3			740.9	88	7.7	116	110	8.62	0.0755	0.06	7.15		186.7				
	9-9-2023	1655	2	21.8			740.8	88	7.7	116	108.9	8.62	0.0753	0.06	7.15		188.4				
	9-9-2023	1656	2.17		19																
	9-9-2023	1657	3	21.6			740.9	82	7.2	115.6	108	8.65	0.0752	0.06	7.02		191.8				
	9-9-2023	1659	4	21			740.8	74	6.6	116.3	107.4	8.6	0.0755	0.06	6.82		198.5				
	9-9-2023	1703	5	20.1			740.9	45	4.1	123.6	112	8.11	0.0808	0.06	6.44		85.5				
5.5	25-07-2023	1800	surface	28.2			738	96	7.7	113.4	115.9	8.82	0.0737	0.06	7.42	-24.1	192.9	1.27	45.47161	-79.88557	271.92
	25-07-2023	1803	1.27		8																
	25-07-2023	1804	2	25.3			737.6	90	7.4	112.8	113.2	8.87	0.0733	0.06	7.1	-3.8	200.4				
	25-07-2023	1807	5	16.5			737.4	3	0.3	124.3	106	8.11	0.0798	0.06	6.33	41.2	127				
5.8 m	29/5/2023	1446	surface	24.1			737	95	8	41	40.3	24.39	0.0267	0.03	7.11	-10.3	214.4	1.92	45.472384	-79.887073	
			1.92		18																
		1451	5 m	14.5			735.6	82	8.4	197.9	158.6	5.04	0.1291	0.01	6.8	8.4	224.2				
5.6 m	28/8/2022	1033	surface	22.5	< 30			94.7	8.2				0.024	0.02	6.98		222.5				
		1032	1m	22.34				80.9	7.17				0.024	0.02	6.84		162.7				
		1031	2m	21.95				67.8	5.59				0.024	0.02	6.62		93				
		1030	3m	21.84				61.4	4.23				0.024	0.02	6.55		-34.5				
		1029	4m	21.57				60.4	6.03				0.031	0.02	6.59		-81.1				
		1027	5m	21.51	< 30			4.8	0.54				0.036	0.02	6.63		-76.7				

T Jones Bay, LPP 13, Manitouwabing Lake

[illegible]

U Stewart Park, Manitouwabing River

Lake Manitouwabing McKellar ON Stewart Park																						
Site	Date	Time	Depth	Temp	Total Phos	Calcium	Barr Pres	DO %	DO mg/L	SPC	C μS/cm	K Ωcm	TDS g/L	Sal	pH	pH	ORP	secchi	Lat	Long	Alt	
depth	D/M/Y	24 h	m	°C	mcg/L MLCA	mg/L MLCA	mm Hg			μS/cm	conductivity	resistance		ppT		mV	mV	m				
4.4m	17-7-2024	1521	surface	26.8			735.2	83	6.3	33.9	35	29.51	0.022	0.02	6.76	1.6	121.8	0.945	45.46007	-79.85544	271.03	
	17-7-2024	1529	0.9	25.1	22		734.1	68	5.3	34.4	34.6	29.04	0.0224	0.02	6.56	13.4	139.2					
	17-7-2024	1534	2	24.7			733.4	55	4.4	34.9	34.7	28.65	0.0227	0.02	6.45	19.5	150.5					
	17-7-2024	1537	3	24.5			732.6	51	4.1	126.9	125.7	7.87	0.0825	0.06	6.4	22.2	154.9					
	17-7-2024	1541	4	24.1			732.4	42	3.4	135.2	132.7	7.38	0.0877	0.07	6.35	25.1	156.4					
4.4 m	26-5-2024	1118	surface	19.8			740.1	81	7.3	33.7	30.4	29.66	0.0219	0.02	6.88	-0.8	171.7	1.2	45.45997	-79.85541	274.57	
	26-5-2024	1123	1.2	19.6	18	4.34	740	77	6.9	33.6	30.1	29.78	0.0218	0.02	6.85	0.7	185.4					
	26-5-2024	1126	2.5	19.5			739.8	72	6.4	33.7	30.1	29.68	0.0219	0.02	6.79	4.1	195.7					
	26-5-2024	1132	4	16.8			739.4	40	3.7	34.3	28.8	29.18	0.0223	0.02	8.67	28.1	212.8					
4.8 m	9-9-2023	1550	surface	24.4			743.3	83	6.8	113	111.7	8.86	0.0733	0.06	6.92		157	1.41	45.45997	-79.8555	272.56	
	9-9-2023	1553	1 m	22			742.3	80	6.9	114.5	108.4	8.73	0.0747	0.06	6.86		163.7					
	9-9-2023	1555	1.41	21.6	15	4.83	741.9	76	6.6	113.9	106.6	8.79	0.074	0.06	6.81		179.7					
	9-9-2023	1559	2	21.4			741.5	75	6.6	113.3	105.5	8.82	0.0737	0.6	6.78		182.3					
	9-9-2023	1602	3	20.9			741.6	69	6.1	113.3	104.5	8.83	0.0736	0.06	6.71		193.2					
	9-9-2023	1604	4	19.9			741.2	36	3.4	114.9	103.9	8.69	0.0748	0.06	6.39		206.8					
4.9 re	25-7-2023	1714	surface	27.4			736.2	100	7.8	110.6	115.6	9.05	0.0718	0.06	7.38	-21.5	188.6	1.06	45.45996	-79.8556	269.14	
	25-7-2023	1720	1.06		10																	
	25-7-2023	1721	2	24.5			736.9	79	6.6	112	111.2	8.92	0.0729	0.06	7	1.5	205					
	25-7-2023	1724	4	21.5			737.1	5	0.05	112.7	104.9	8.85	0.0745	0.06	6.31	41.6	117.9					
4 m	29/5/2023	1257	surface	21.9			733.8	95	8.4	27.5	26	36.34	0.0179	0.02	7.04	-5.3	176.4	1.47	45.46008	-79.85604		
			1.47		14																	
		1307	3 m	18			734.1	75	7	30.4	26.3	32.89	0.0197	0.02	6.73	12.6	199.5					
3 m										Ms/c cm												
3 m	28/08/2022	1452	surface	22.5	< 30			2.1	1.99	0.037			0.023	0.02	6.81		-73.8					

V Robinson Bay, Manitouwabing Lake

Lake Manitouwabing McKellar ON Robinson Bay																				
Site	Date	Time	Depth	Temp	Total Phos	Barr Pres	DO %	DO mg/L	SPC	C μS/cm	K Ωcm	TDS g/L	Sal	pH	pH	ORP	secchi	Lat	Long	Alt
depth	D/M/Y	24 h	m	°C	mcg/L MLCA	mm Hg			μS/cm	conductivity	resistance		ppT		mV	mV	m			
17.8 m	21-7-2024	1644	surface	26.1		740.9	94	7.5	37.1	37.7	26.98	0.0241	0.02	7.22	-25.7	151.9	1.8	45.50008	-79.88078	277.4
	21-7-2024	1648	1.7	24.8	104	740.6	72	5.8	140.4	139.8	7.13	0.0909	0.07	7.16	-23.2	148.4				
	21-7-2024	1653	4	15.5		740.1	24	2.4	157.3	129.1	6.37	0.1018	0.08	6.3	27.1	176.2				
	21-7-2024	1656	8	9.1		739.6	43	4.8	170.3	118.1	5.9	0.1098	0.08	6.44	18.1	210.1				
	21-7-2024	1659	12	7.5		739.2	32	3.7	175.5	116.6	5.7	0.1136	0.08	6.35	22.8	225.7				
	21-7-2024	1702	16	6.7		738.5	5	0.5	440.1	286	2.26	0.2892	0.21	7.31	-30.1	-194.6				
19.1	31-5-2024	1157	surface	19.3		741.8	89	8.1	38.1	34	26.23	0.0248	0.02	7.06	-12.5	152.8	1.57	45.49989	-79.88079	268.84
	31-5-2024	1203	1.6	19.1	14	741.8	85	7.6	38.2	33.9	26.17	0.0248	0.02	7.08	11.2	163.5				
	31-5-2024	1207	5	9.3		741.2	70	7.9	77.5	54.1	12.96	0.0501	0.04	6.63	12.9	190.1				
	31-5-2024	1211	10	6.7		740.9	66	7.8	82.7	53.8	12.1	0.0536	0.04	6.57	15.7	206.2				
	31-5-2024	1215	15	5.4		741.1	32	4	85.6	53.4	11.7	0.0555	0.04	6.41	24.4	230.9				
	31-5-2024	1219	18	5.2		740.8	14	1.7	92.5	57.6	10.8	0.0602	0.04	6.52	18.9	64.1				