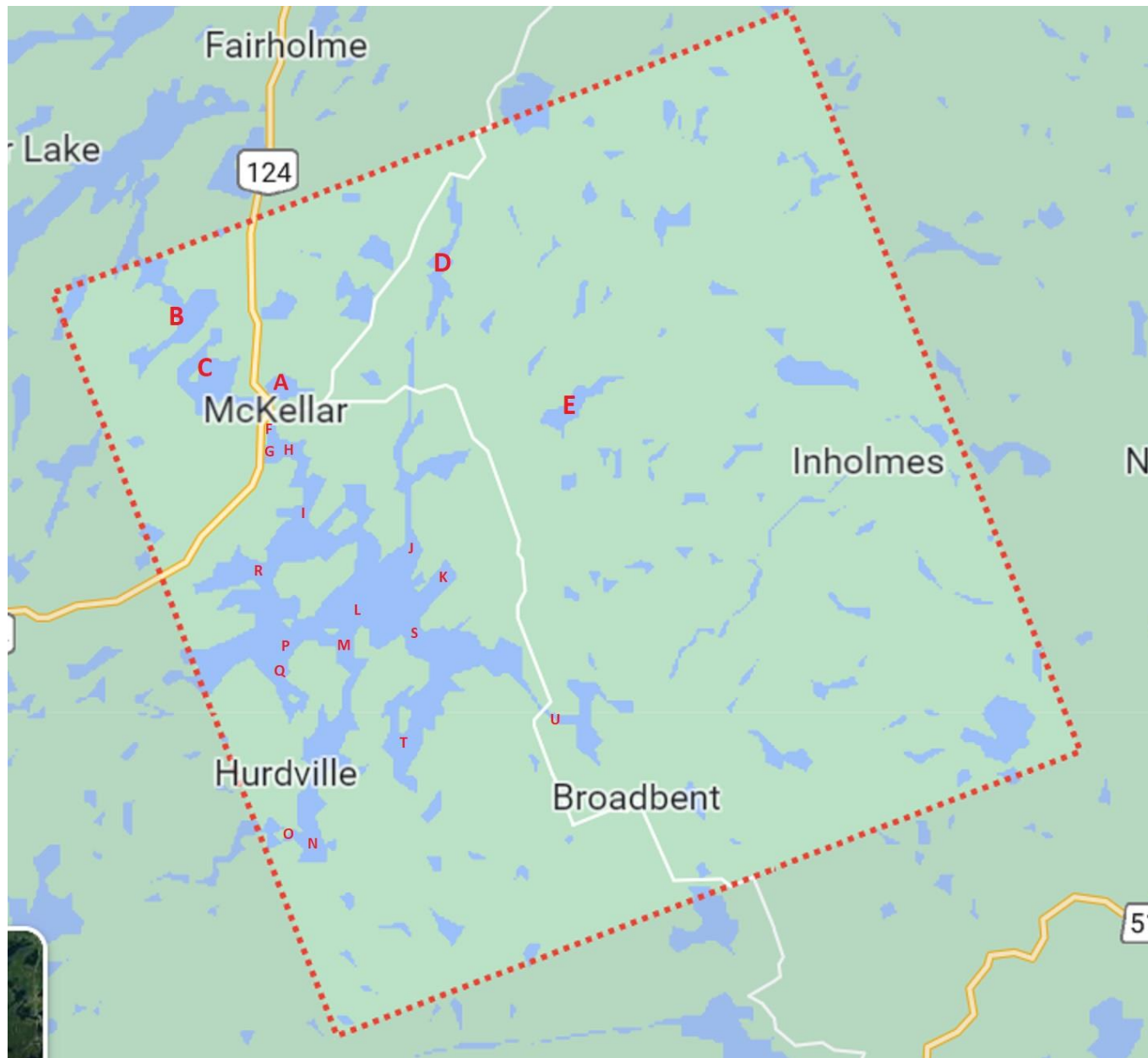


Extended Surface Water Testing McKellar Township* Posted July 10 2023

* Sites tested were: the lakes currently being monitored for E.coli, sites chosen for the Lake Capacity study of 2021, and current sites for testing for the Ontario Government's Lake Partner Program.

Lake Partner Program data can be found at <https://data.ontario.ca/dataset/ontario-lake-partner>





- A** Armstrong Lake
- B** Grey Owl Lake
- C** McKellar Lake
- D** Moffat Lake
- E** Mary Jane Lake
- F** Minerva
- G** McKellar Bay LPP 19
- H** Boat Launch LPP 18
- I** McKellar Narrows
- J** Luigis/Camp Rds
- K** Inn Rd
- L** Great Bay
- M** Hurdville Arm
- N** Hurdville Rd LPP 23
- O** Hurdville Dam
- P** South Tait
- Q** Pine Point Tr LPP 8
- R** Island Rd
- S** Manitouwabing River Inlet
- T** Jones Bay LPP 13
- U** Stewart Park

A Armstrong Lake

Armstrong Lake																					
Site	Date	Time	Depth	Temp	Total Phos	Calcium	Barr Pres	SPC	C μ S/cm	K Ω cm	TDS g/L	Sal	DO %	DO mg/L	pH	pH	ORP	secchi	Lat	Long	Alt
depth	D/M/Y	24 hr	m	$^{\circ}$ C	mcg/L MLCA	mg/L MLCA	mm Hg	μ S/cm	conductivity	resistance	ppT					mV	mV	m			
12 m	28/5/2023	840	surface	17.8			745.6	101.6	87.7	9.84	0.066	0.05	92	8.8	7.41	-27.7	150.5	2.29	45.51248	-79.91768	274.49
			2.29		18	4.66															
		846	1 m	17.7			745.8	101.5	87.4	9.85	0.066	0.05	89	8.4	7.38	-26	161				
		853	5 m	7.1			745.1	103.8	68.3	9.64	0.0674	0.05	71	8.5	6.66	15.8	213.9				
		901	10 m	5			743.3	204.3	128.9	4.78	0.1365	0.1	22	2.8	6.42	29.8	241.8				

B Grey Owl Lake

Grey Owl Lake																					
Site	Date	Time	Depth	Temp	Total Phos	Calcium	Barr Pres	SPC	C μS/cm	K Ωcm	TDS g/L	Sal	DO %	DO mg/L	pH	pH	ORP	secchi	Lat	Long	Alt
depth	D/M/Y	24 hr	m	°C	mcg/L MLCA	mg/L MLCA	mm Hg	μS/cm	conductivity	resistance	ppT					mV	mV	m			
5 "	23-06-23	10:22	1.14		5													1.14	45.52532	-79.94168	278.03
5.2 m	1/6/2023	1215	surface	23.9			737.9	134	131.1	7.45	0.0872	0.07	91	7.8	7.5	-32.9	200.7	2.34	45.5269	-79.94281	276.2
			2.34		105	4.33															
		1222	3 m	16.6			737.6	152.4	127.8	6.59	0.0985	0.07	91	8.9	7.33	-22.1	202.8				
		1232	5 m	12.2			738.8	156.3	118	6.41	0.1012	0.07	27	2.7	6.42	29.8	178.1				

C McKellar Lake

McKellar Lake																					
Site	Date	Time	Depth	Temp	Total Phos	Calcium	Barr Pres	SPC	C μ S/cm	K Ω cm	TDS g/L	Sal	DO %	DO mg/L	pH	pH	ORP	secchi	Lat	Long	Alt
depth	D/M/Y	24 hr	m	$^{\circ}$ C	mcg/L MLCA	mg/L MLCA	mm Hg	μ S/cm	conductivity	resistance	ppT					mV	mV	m			
6.5 m	1/6/2023	1340	surface	24.8			738.5	133.8	132.9	7.48	0.0867	0.07	92	7.6	7.34	-23.9	212	4.18	45.50987	-79.92487	274.1
			4.18		25	3.9															
		1346	3 m	16.4			738.4	154	128.7	6.49	0.1003	0.08	87	8.6	7.06	-6.9	229.7				
		1358	6 m	9.6			738	165.1	116.4	6.06	0.107	0.08	30	3.5	6.41	30.5	247.3				

D Moffat Lake

Moffatt Lake																					
Site	Date	Time	Depth	Temp	Total Phos	Calcium	Bar Pres	SPC	C μ S/cm	K Ω cm	TDS g/L	Sal	DO %	DO mg/L	pH	pH	ORP	secchi	Lat	Long	Alt
depth	D/M/Y	24 hr	m	$^{\circ}$ C	mcg/L MLCA	mg/L MLCA	mm Hg	μ S/cm	conductivity	resistance	ppT					mV	mV	m			
3.5 m	1/6/2023	1039	surface	24.8			742.6	102.9	102.6	9.71	0.067	0.05	96	7.9	7.24	-18.1	184	2.24	45.54103	-79.87785	271.28
		2.24			24	3.94															
		1044	1	20.9			741.9	115.1	106.1	8.7	0.0747	0.06	86	7.7	6.93	0.5	204.3				
		1052	3	14.7			740.5	129.3	103.5	7.75	0.0838	0.06	60	6.1	6.49	26.2	233.6				

E Mary Jane Lake

[illegible]

F Minerva Park, Manitouwabing Lake

Lake Manitouwabing		tip of Minerva Park		McKellar		Ontario		Canada														
Site	Date	Time	Depth (m)	Temp	Total Phos	Calcium	Barr Pres	SPC	C μS/cm	K Ωcm	Ms/cm	TDS g/L	Sal	DO %	DO mg/L	pH	pH mV	ORP	secchi	Lat	Long	Alt
depth	D/M/Y	24 hr		°C	mcg/L	MLCA mg/L	MLCA	mm Hg	μS/cm	conductivity	resistance			ppT				mV	m			
1m	1/9/2022	1116	surface	21.24	< 30							0.066	0.043	0.03	101.3	8.9	7.37		246.9	N/A		

G McKellar Bay, LPP 19, Manitouwabing Lake

[illegible]

H Lakeshore Rd Boat Launch LPP 18 Manitouwabing Lake

[illegible]

McKellar Narrows, Manitouwabing Lake

Lake Manitouwabing, McKellar ON				McKellar Narrows																	0
Site	Date	Time	Depth	Temp	Total Phos	Calcium	Barr Press	SPC μ S/cm	C μ S/cm	K Ω cm	TDS g/L	Sal	DO	DO	pH	pH mV	ORP	secchi	Lat	Long	Alt
depth	D/M/Y	24 hr	m	$^{\circ}$ C	mcg/L MLCA	mg/L MLCA	mmHg		conductivity	resistance		ppT	%	mg/L			mV	m			
2 m	31/5/2023	1723	surf	26			738	150.8	153.4	6.64	0.0978	0.07	93	7.5	7.26	-18.9	204.7	NA	45.49094	-79.91546	
		1733	1.5 m	20.2	13	4.36	737.7	169.2	154	5.91	0.1099	0.08	101	9	7.73	-45.7	194.7				
									Ms/c cm												
2.1 m	1/9/2022	1346	1	20.04					0.059		0.038	0.03	89.7	8.07	7.26		277.2				
		1348	surface	21.03	< 30				0.053		0.034	0.02	90.8	8.12	7.15		260.7				

J Luigis/Camp Rds, Manitouwabing Lake

Lake Manitouwabing, McKellar ON					Luigis Lane / Camp Rd																
Site	Date	Time	Depth	Temp °C	Total Phos	Calcium	Barr Pres	SPC	C μS/cm	K Ωcm	TDS g/L	Sal	DO %	DO	pH	pH mV	ORP	secchi	Lat	Long	Alt
depth	D/M/Y	24 h	(m)		mcg/L MLCA	mg/L MLCA	mm Hg	μS/cm	conductivity	resistance		ppT		mg/L			mV	m			
18.3 m	31/5/2023	1805	surface	24.8			738.2	145.5	145.1	6.87	0.0946	0.07	97	7.9	7.44	-30.1	208.7	2.2	45.48513	-79.89083	271.2
			2.2		8																
		1812	5	14.9			738.3	164.4	131.8	6.12	0.1061	0.08	84	8.4	6.95	-0.05	240.7				
		1821	10	9.9			738.7	162	115.3	6.17	0.1055	0.08	69	7.8	6.57	21	257.1				
		1825	15	8.3			738.9	162.5	110.5	6.16	0.1054	0.08	67	7.9	6.54	22.5	263				
		1829	17	7.7			738.9	161.6	108	6.18	0.1051	0.08	61	7.2	6.49	25.4	266.8				
									Ms/c cm												
9m	30/8/2022	933	surface	23.18	< 30				0.038		0.025	0.02	99	8.45	7.09		251.7				
		931	4m	23.1					0.038		0.025	0.02	86.2	7.53	6.99		217.4				
		929	8m	12.18					0.036		0.023	0.02	24.2	2.45	6.01		241.8				

K Inn Rd, Manitouwabing Lake

Lake Manitouwabing, McKellar ON																							
Inn Rd																							
Site	Date	Time	Depth	Temp °C	Total Phos	Calcium	Barr Pres	SPC	C µS/cm	K Ωcm	TDS g/L	Sal	DO %	DO	pH	pH	ORP	secchi	Lat	Long	Alt		
depth	D/M/Y	24 h	(m)		mcg/L	MLCA	mg/L	MLCA	mm Hg		µS/cm	conductivity	resistance		ppT		mg/L	mV	mV	m			
7.1 m	31/5/2023	1850	surface	26.5					739.6	144.9	149.3	6.89	0.0944	0.07	94	7.6	7.3	-21.7	231.3	2.75	45.48312	-79.88082	273.09
			2.75		14				739.5	163.4	126.9	6.08	0.1072	0.08	71	7.5	6.71	13.3	251				
		1856	6.0 m	13.2																			
											Ms/c cm												
		1221	surface	23.32	< 30						0.038		0.025	0.02	101.6	8.67	6.94		210.9				
		1220	1	22.83							0.038		0.025	0.02	95.2	8.2	6.83		195.5				
		1218	3	22.35							0.038		0.025	0.02	73.7	6.73	6.64		142				
		1217	5	21.14							0.038		0.026	0.02	43.5	3.94	6.45		98.9				
8.2m	28/8/2022	1215	7	15.02	< 30						0.047		0.026	0.02	3.9	0.31	6.45		-7.2				

L Great Bay, Manitouwabing Lake

[illegible]

M Hurdville Arm, Manitouwabing Lake

Lake Manitouwabing, McKellar OI		Sunnyside Park Dr / Smith Pine Cres																			
Site	Date	Time	Depth	Temp °C	Total Phos	Calcium	Barr Pres	SPC	C μS/cm	K Ωcm	TDS g/L	Sal	DO %	DO	pH	pH	ORP	secchi	Lat	Long	Alt
depth	D/M/Y	24 hr	(m)		mcg/L	MLCA mg/L	mm Hg	μS/cm	conductivity	resistance		ppT		mg/L		mV	mV	m			
11.8m	28/5/2023	1518	surface	19.1			736.7	31.4	27.9	31.94	0.0203	0.02	110	10.1	7.35	-24.5	196.5	1.9m	45.4716	-79.90366	
			1.9		38																
		1523	5	13.5			737.3	112.2	87.6	8.96	0.0725	0.05	98	10.2	6.93	0.2	230.6				
		1527	10	13.8	49		737.2	143.3	113	7.03	0.0923	0.07	61	6.4	6.57	21.2	246.4				
									Ms/c	cm											
12.5m	29/08/2022	1626	surface	23.78	< 30				0.038		0.025	0.02	103	8.68	6.89		206.7				
		1625	2m	22.48				0.038		0.025	0.02	83	7.31	6.67		172.6					
		1623	7m	10.8				0.035		0.023	0.02	18.4	2.07	6.38		118					
		1621	12m	9.86	< 30				0.085		0.055	0.04	9.4	2.01	6.68		-20.3				

N Hurdville Rd, LPP 23, Manitouwabing Lake

Lake Manitouwabang, McKellar ON					LPP Site 23		Hurdville Rd																	
Site	Date	Time	Depth	Temp °C	Total Phos	Calcium	Barr Pres	SPC	C µS/cm	K Ωcm	TDS g/L	Sal	DO %	DO	pH	pH	ORP	secchi	Phos	Calcium Cl	Lat	Long	Alt	
depth	D/M/Y	24 hr	(m)		mcg/L	MLCA	mm Hg	µS/cm	conductivity	resistance	ppT		mg/L		mV	mV	m		mcg/L LPP	mg/L LPP	mg/L LPP			
10 m	28/05/2023	1358	surface	19.6			737.7	29.9	26.8	33.9	0.0194	0.02	101	9.3	7.19	14.6	186.3	1.4 m				45.43820438	-79.9098878	
			1.4		12																			
			1406 5m	14.3			737.4	30.5	24.3	32.75	0.0199	0.02	86	8.7	6.8	9	220.3							
			1411 9m	9			738.1	110.9	77	9.02	0.072	0.05	17	2	6.26	38.4	260.1							
	2022																		x	x				
	02-Jun-21																		11.5	4.1	0.5			
	10-Oct-20																		11.2	4.2	2.5			

O Hurdville Dam, Manitouwabing Lake

Lake Manitouwabing, McKellar ON Hurdville Dam																							
Site	Date	Time	Depth	Temp °C	Total Phos	Calcium	TDS	Barr Pres	SPC	C µS/cm	K Ωcm	TDS g/L	Sal	DO %	DO	pH	pH	ORP	secchi	Lat	Long	Alt	
depth	D/M/Y	24 hr	m		mcg/L MLCA	mg/L MLCA	mg/L	mm Hg	µS/cm	conductivity	resistance		ppT		mg/L		mV	mV	m				
2.9m	28/5/2023	1320	surf	18.6				739.6	30.8	27.1	32.47	0.02	0.02	95	8.6	7.24	-17.5	161.2	1.36	45.44119	-79.91987	266.63	
			1.36		18	3.84	17																
		1326	2 m	15.3				739.1	30.6	24.9	32.71	0.0199	0.02	90	9	7.1	-9.7	175.5					
										Ms/c cm													
5.4m	1/9/2022	1353	surface	21.71	< 30	4.75				0.04		0.026	0.02	86.5	7.61	6.86		312.8					
		1351	2	20.74						0.039		0.026	0.02	78.4	7.07	6.99		314.3					
		1350	4	20.32						0.039		0.026	0.02	80.6	7.29	7.09		309.4					

P South Tait, Manitouwabing Lake

Lake Manitouwabing		McKellar, ON		South Tait																	
Site	Date	Time	Depth	Temp °C	Total Phos	Calcium	Barr Pres	SPC	C µS/cm	K Ωcm	TDS g/L	Sal	DO %	DO	pH	pH	ORP	secchi	Lat	Long	Alt
depth	D/M/Y		m		mcg/L MLCA	mg/L MLCA	mm Hg	µS/cm	conductivity	resistance		ppT		mg/L		mV	mV	m			
14 m	28/5/2023	1604	surface	19			737.1	32.2	28.4	31.07	0.0209	0.02	108	9.9	7.4	-27.2	192.3	2.08	45.47043	-79.91882	
			2.08		14																
		1612	5	17.2			737.2	111.7	94.8	8.94	0.0726	0.06	78	7.5	6.94	0	222.8				
		1617	10	12.1			738.1	117.3	88.8	8.51	0.0764	0.06	59	6.3	6.55	22.2	242.6				
		1621	13	11	19		738.5	121	88.4	8.25	0.0786	0.06	43	4.7	6.39	31.2	250.8				
									Ms/c cm												
10.7 m	1/9/2022	1237	9	15.83	< 30				0.037		0.024	0.02	22.8	2.31	6.58		194.5				
		1239	6	20.82					0.038		0.025	0.02	72.9	6.45	6.74		245.2				
		1241	3	21.03					0.38		0.025	0.02	81	7.28	6.87		260.7				
		1243	surface	21.62	< 30				0.038		0.025	0.02	92.5	8.14	6.99		268.9				

Q Pine Point Trail, LPP 8, Manitouwabing Lake

Lake Manitouwabing			McKellar ON		LPP site 8		Pine Point Trail																	
Site	Date	Time	Depth	Temp	Total Phos	Calcium	Barr Pres	SPC	C	K	TDS	Sal	DO %	DO	pH	pH mV	ORP	secchi	Phos	Calcium	Cl	Lat	Long	Alt
depth	D/M/Y	24 h	(m)	°C	mcg/L MLCA	mg/L MLCA	mm Hg	µS/cm	conductivity	resistance	g/L	ppT	mg/L	mg/L		mV	mV	m	mcg/L LPP	mg/L LPP	mg/L			
7.7 m	4/6/2023	1145	surface	23.3			737.9	107.6	104	9.32	0.0698	0.05	89	7.6	7.28	-20.1	191.5	2.11				45.46683	-79.91813	269.65
			2.11		11																			
		1151	3	16.7			738.4	110.2	93	9.09	0.0714	0.05	97	9.4	7.21	-15.8	198.9							
		1157	7	9.7			737.3	108.7	76.9	9.19	0.0707	0.05	59	6.7	6.47	26.7	157.7							
		1204	2.11																					
	2022																		x					
	24-Apr-21																		12.2	4.2	2.2			
	12-Jul-05																							
	19-May-19																		11.1	3.3	2			
	20-May-18																		13.1	3.6	1.8			
	23-May-17																		12	3.6	2.1			
	19-May-16																		9	3.3	1.8			
	05-Jun-15																		9.4	3.5	1.8			
	18-May-14																		11.5	3.6				
	01-Jun-13																		14.8	3.2				
	22-May-12																		7.7	4				
	24-Apr-11																		13.4	3.9				
	27-May-10																		10	3.4				
	05-May-09																		11.2					
	11-May-08																		12.7	3.7				
	21-May-07																		9.9					
	14-May-06																		10.2					
	07-May-05																		14.1					
	08-May-04																		11.9					
	04-May-03																		13.3					
	05-May-02																		10.2					

R Island Rd, Manitouwabing Lake

[illegible]

S Manitouwabing River Inlet

[illegible]

T Jones Bay, LPP 13, Manitouwabing Lake

[illegible]

U Stewart Park, Manitouwabing River

Lake Manitouwabing					McKellar ON		Stewart Park															
Site	Date	Time	Depth	Temp	Total Phos	Calcium	Barr	Pre	SPC	C μS/cm	K Ωcm	TDS g/L	Sal	DO %	DO mg/L	pH	pH	ORP	secchi	Lat	Long	Alt
depth	D/M/Y	24 h	m	°C	mcg/L	MLCA	mg/L	MLCA	mm Hg	μS/cm	conductivity	resistance	ppT				mV	mV	m			
4 m	29/5/2023	1257	surface	21.9					733.8	27.5	26	36.34	0.0179	0.02	95	8.4	7.04	-5.3	176.4	1.47	45.46008	-79.85604
			1.47			14																
		1307	3 m	18					734.1	30.4	26.3	32.89	0.0197	0.02	75	7	6.73	12.6	199.5			
										Ms/c cm												
3 m	28/08/2022	1452	surface	22.5	< 30					0.037			0.023	0.02	2.1	1.99	6.81	-73.8				